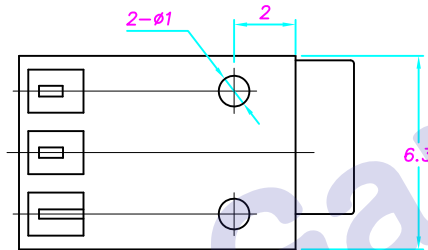
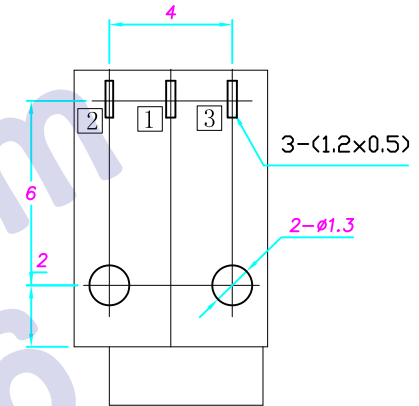
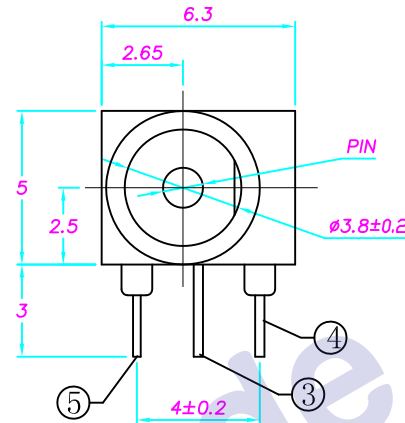
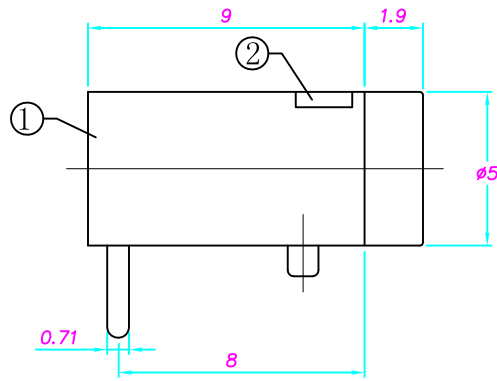
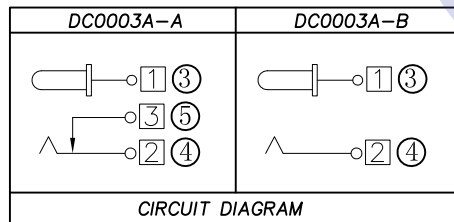


P. C. B Layout
(Printed-sided view)



- SPECIFICATION**
- 1.Rating : DC 30V 1.0A;
 - 2.Contact resistance: ≤50mΩ;
 - 3.Insulation resistance: ≥100MΩ (DC250V);
 - 4.Withstand voltage: 500VAC ;
 - 5.Insertion and extraction force: 3-25N;
 - 6.life test: 5,000 cycles.

PIN	φ1.0	φ1.3	
APPD.			



□ : TERMINAL NO. ○ : ITEM NO.

⑤	Shunt terminal	1	Brass t=0.3	DC00030-03(WP-DC0005)	Ag-Plating
④	Tip spring	1	STAINLESS STEEL t=0.2	DC00030-02(TP-DC0005)	Ag-Plating
③	Center pin	1	Brass	DC00030-99E(JZ-DC0001)	Ag-Plating
②	Cover	1	PA66+15%GF/PBT	DC00030-S2(GZ-DC0003)	
①	Housing	1	PA66+15%GF/PBT	DC0003A-S1(ST-DC0014)	
NO.	DESCRIPTION	QTY	MATERIAL	PART NO.	PLATING
UNIT:MM		TYPE:		MODEL NO:	
		DC POWER JACK		DC0003A-_E	
		PAPER NO: A4		PAGE 1 OF 1	
		TOLERANCE		ANGLES	
		±0.3		±2'	
		SCALE		VER	
		FULL		3	
DESIGNER BY:			HDC有限公司		
CHECK BY:					
APPROVED BY:					