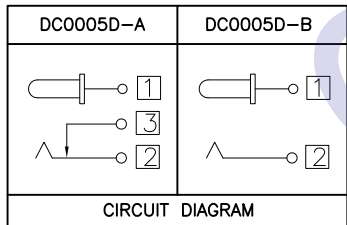
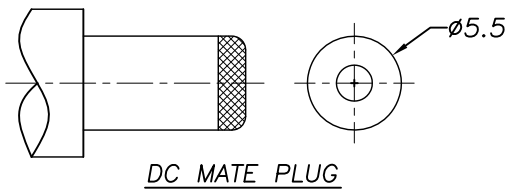


P.C.B Layout  
(Copper-sided view)

DC 0 0 0 5 D - ? ? ? ? ? ?

- (1) (2) (3) (4) (5) (6) (7) (8) (9)
- (1):Series type:DC=DC POWER JACK  
 (2):Series No.  
 (3):Schematic option:  
 A ? B  
 (4):Center pin diameter:  
 H:φ2.0 , I:φ2.35 , J:φ2.5  
 (5):Material of housing:  
 PB=PBT (Standard)  
 (6):Housing color:  
 0A=Black (Standard)  
 (7):Terminal plating:  
 S=Silver(Ag)  
 (8):Special option:  
 0=No special option  
 (9):Packing mode:  
 4=Bag packing



□ : TERMINAL NO.

Model No.	DC0005D-_H	DC0005D-_I	DC0005D-_J
PIN	φ2.0	φ2.35	φ2.5

SPECIFICATION

- Rating ? DC 20V 2.5A?
- Contact resistance? ≤ 30mΩ?
- Insulation resistance?? 100MΩ (DC250V)?
- Withstand voltage? 500VAC ?
- Insertion and extraction force? 3-30N;
- life test? 5,000 cycles?

⑥	Shunt terminal	③	1	Brass t=0.5	DC0005D-03(WP-DC0018)	Ag-Plating
⑤	Tip spring	②	1	Bronze t=0.30	DC0005D-02(DC0005D-06-01)	Ag-Plating
④	Center pin terminal	①	1	Brass t=0.50	DC0005D-01(PP-DC0014)	Ag-Plating
③	Center pin	①	1	Brass	DC00050-99H/J	Ni-Plating
②	Cover		1	PBT	DC00050-S2(GZ-DC0002)	
①	Housing		1	PBT	DC00050-S1(ST-DC0002)	

NO.	DESCRIPTION	QTY	MATERIAL	PART NO.	PLATING
-----	-------------	-----	----------	----------	---------

UNIT:MM	TYPE:	MODEL NO:	PAPER NO: A4	PAGE 1 OF 1
	DC POWER JACK	DC0005D-__PB0AS04	TOLERANCE	ANGLES
			±0.3	±2°
			SCALE	VER
			FULL	2

DESIGNER BY:	Li Wenhui 2008.12.22	<b>HDC有限公司</b>
CHECK BY:		
APPROVED BY:		