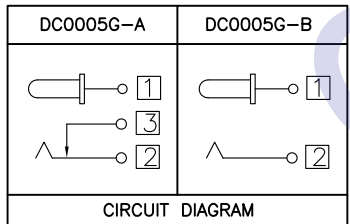
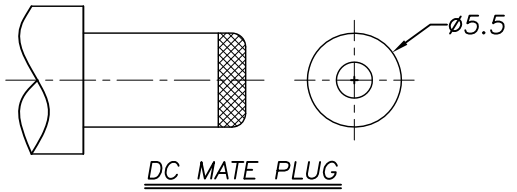


P.C.B Layout
(Copper-sided view)

DC 0 0 0 5 G - ? ? ?? ?? ? ?
(1) (2) (3) (4) (5) (6) (7) (8) (9)

- (1):Series type:DC=DC POWER JACK
- (2):Series No.
- (3):Schematic option:
A ? B
- (4):Center pin diameter:
H:φ2.0 , I:φ2.35 , J:φ2.5
- (5):Material of housing:
PB=PBT (Standard)
- (6):Housing color:
0A=Black (Standard)
- (7):Terminal plating:
T=Tin(Sn)
- (8):Special option:
0=No special option
- (9):Packing mode:
4=Bag packing



□ : TERMINAL NO.

Model No.	DC0005G--H	DC0005G--I	DC0005G--J
PIN	φ2.0	φ2.35	φ2.5

⑥	Shunt terminal	③	1	Brass t=0.5	DC0005D-03(WP-DC0018)	Sn-Plating
⑤	Tip spring	②	1	Bronze t=0.30	DC0005G-02(DC0005G-06-01)	Sn-Plating
④	Center pin terminal	①	1	Brass t=0.50	DC0005D-01(PP-DC0014)	Sn-Plating
③	Center pin	①	1	Brass	DC00050-99H/J	Ni-Plating
②	Cover		1	PBT	DC00050-S2(GZ-DC0002)	
①	Housing		1	PBT	DC0005B-S1(ST-DC0004)	

NO.	DESCRIPTION	QTY	MATERIAL	PART NO.	PLATING
UNIT:MM		TYPE:		MODEL NO:	PAPER NO: A4
		DC POWER JACK		DC0005G--_PB0AT04	PAGE 1 OF 1
DESIGNER BY:		Li Wenhui 2008.12.22		TOLERANCE	ANGLES
CHECK BY:				±0.3	±2°
APPROVED BY:				SCALE	VER
				FULL	2

- SPECIFICATION
- 1.Rating ? DC 20V 2.5A?
 - 2.Contact resistance?≤ 30mΩ?
 - 3.Insulation resistance?? 100MΩ (DC250V)?
 - 4.Withstand voltage? 500VAC ?
 - 5.Insertion and extraction force? 3-30N;
 - 6.life test? 5,000 cycles?

HDC有限公司