

DC 0 0 1 8 0 - □ □ □ □ □ □ □ □ □

(1) (2) (3) (4) (5) (6) (7) (8) (9)

(1):Series type:DC=DC POWER JACK

(2):Series No.

(3):Schematic option:
A、B

(4):Center pin diameter:

H:φ2.0, I:φ2.35, J:φ2.5

(5):Material of housing:

46=PA46 (Standard)

(6):Housing color:

0A=Black (426C) 2L=Pink (701C) 3C=Orange (157C)

Zero 4I=Yellow (108U) 5G=Lime (577C) 6A=Blue (284C)

8F=Grey (422C)

(7):Terminal plating:

T=Tin (Sn)

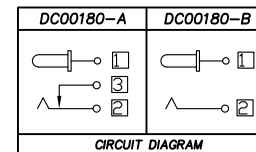
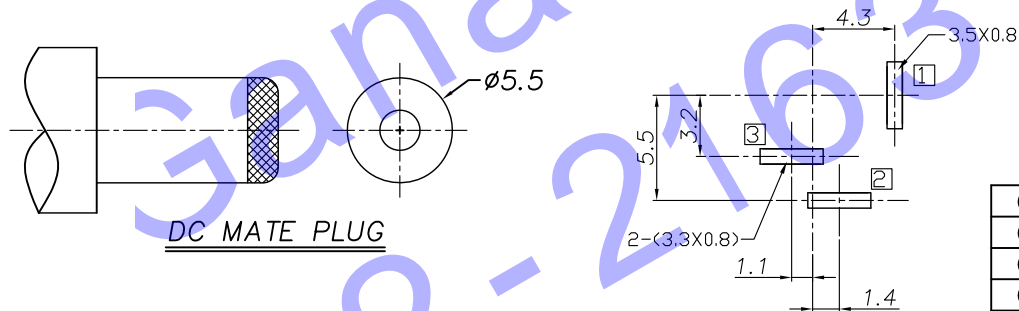
(8):Special option:

0=No special option

(9):Packing mode:

4=Bag packing

P.C.B Layout (Copper-sided view)



□ : TERMINAL NO.

Model No.	DC00180-_H	DC00180-_I	DC00180-_J
PIN	φ2.0	φ2.35	φ2.5

睿誉专用

SPECIFICATION

- 1.Rating ? DC 16V 5A?
- 2.Contact resistance? ≤ 30mΩ?
- 3.Insulation resistance?? 100MΩ (DC250V)?
- 4.Withstand voltage? 500VAC ?
- 5.Insertion and extraction force? 3-30N;
- 6.life test? 5,000 cycles?

NO.	DESCRIPTION	QTY	MATERIAL	PLATING
⑥	Shunt terminal	1	Brass	Sn-Plating
⑤	Tip spring	1	Be-Cu	Sn-Plating
④	Center pin terminal	1	Brass	Sn-Plating
③	Center pin	1	Brass	Ni-Plating
②	Cover	1	PA46 UL94V-0	
①	Housing	1	PA46 UL94V-0	

UNIT:MM	TYPE:	MODEL NO:	PAPER NO: A4	PAGE 1 OF 1
⊕	DC POWER JACK	DC00180-__460AT04	TOLERANCE	ANGLES
			±0.3	±2°
			SCALE	VER
			FULL	3

DESIGNER BY:	Li Wenhui 2009.2.14
CHECK BY:	
APPROVED BY:	

HDC有限公司