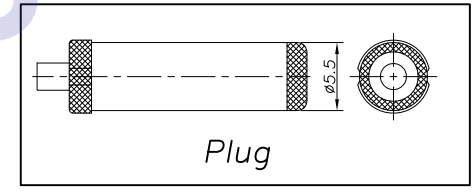
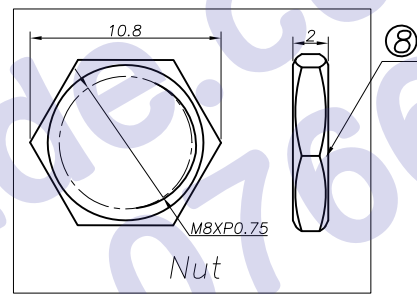
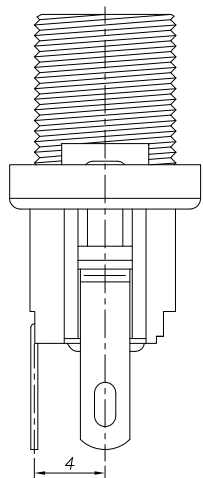
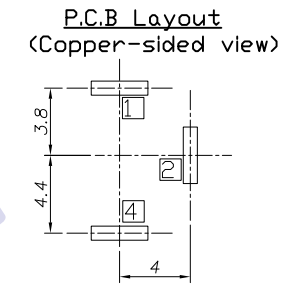
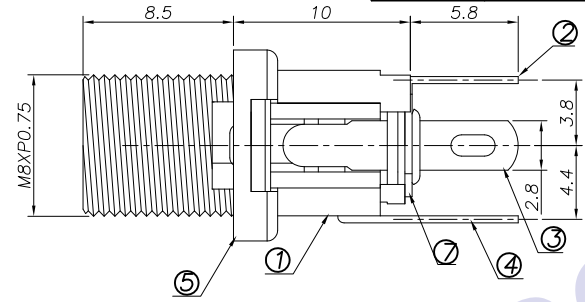
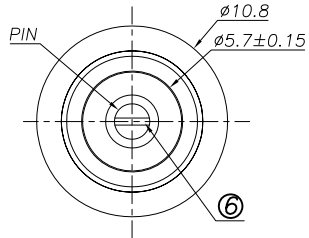


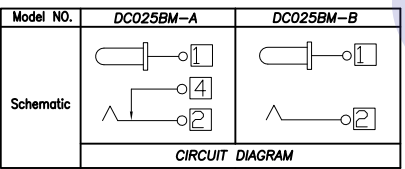
REV. LTR.	DESCRIPTION	SIGN	DATE



Ordering information:  
**DC025BM-? ? P6 0A C 0 4**  
 (1) (2) (3) (4) (5) (6) (7) (8)

- (1): Series No
- (2): Schematic option: A B
- (3): Center pin diameter: H=2.0 I=2.35 J=2.5
- (4): Material of housing: P6=PA66 (Only)
- (5): Housing color: 0A=Black(Only)
- (6): Terminal plating S=Silver(Ag) T=Tin(Sn) C=copper&tin alloy plating (Standard)
- (7): Special option 0:No special option
- (8): Packing mode: 4:Bag packing

Model No.	DC025BM- _H	DC025BM- _I	DC025BM- _J
PIN	$\phi 2.0$	$\phi 2.35$	$\phi 2.5$



□: TERMINAL NO.

**SPECIFICATION**

- 1. Rating ?30V 3.0A?
- 2. Contact resistance?  $\leq 30m\Omega$ ?
- 3. Insulation resistance??100M $\Omega$  (DC250V)?
- 4. Withstand voltage?500VAC ?
- 5. Insertion and extraction force?3-30N;
- 6. life test?5,000 cycles?

NO.	DESCRIPTION	QTY	MATERIAL	PLATING
8	Nut	1	Brass	Ni-Plating
7	Washer	2	Bakelite	
6	Pin	1	Bronze	Ni-Plating
5	Bushing	1	Brass	Ni-Plating
4	Shunt Terminal	4	Brass	Cu-Sn-Plating
3	Tip Spring	2	Phosphor bronze	Cu-Sn-Plating
2	Center pin terminal	1	Brass	Cu-Sn-Plating
1	Housing	1	PA66	Black

UNIT:MM	TYPE:	MODEL NO:	PAPER NO: A4	PAGE 1 OF 1
	DC POWER JACK	DC025BM- _ _P60A504	TOLERANCE $\pm 0.3$	ANGLES $\pm 2^\circ$
DESIGNER BY:	Zhuhong	2008/10/17	SCALE	VER
CHECK BY:			FULL	1
APPROVED BY:				

**HDC有限公司**