

1

2

3

4

5

A

A

B

B

C

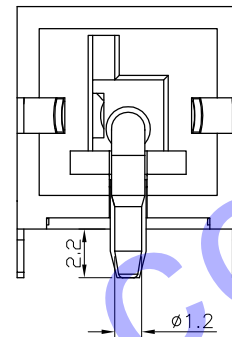
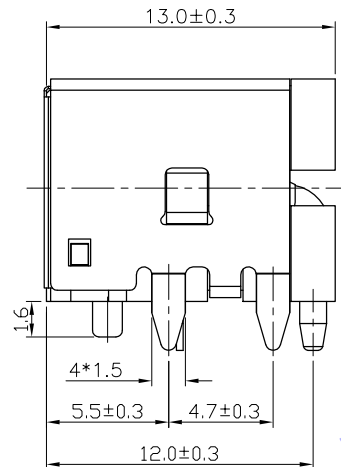
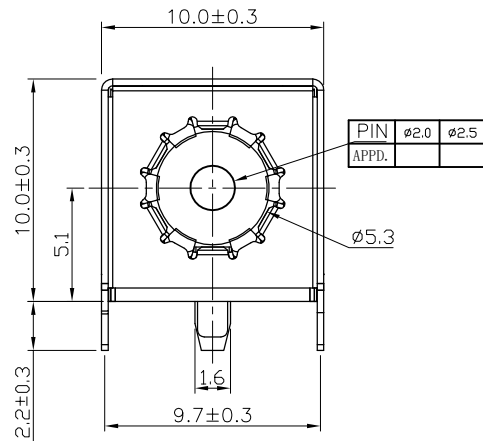
C

D

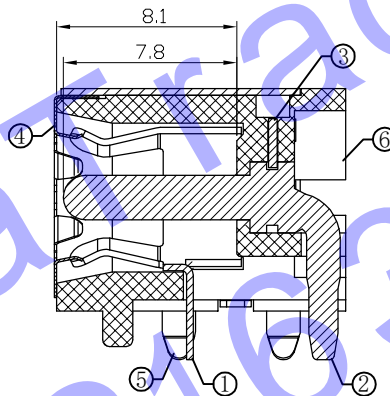
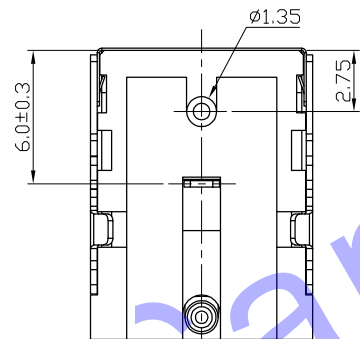
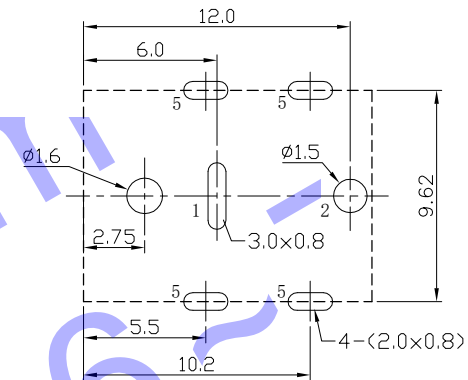
D

E

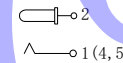
E



T:1.6 Dimensions of PC board holes  
Tolerance : ±0.05(Printed-top view)

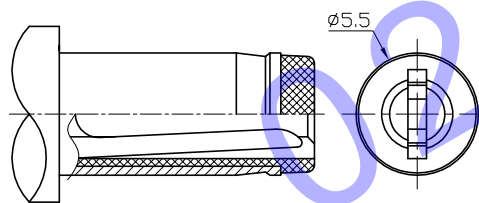
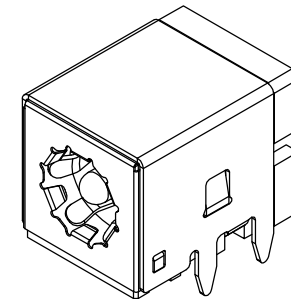


SCHEMATIC

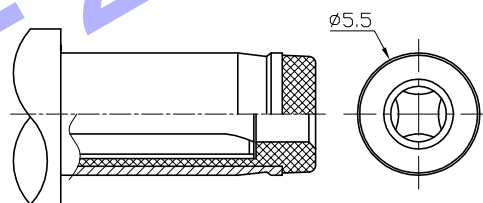


SPECIFICATION

1. Rating;
2. Contact resistance:  $\leq 0.03 \Omega$ ;
3. Insulation resistance:  $\geq 100M \Omega$  (DC250V);
4. Withstand voltage: 500VAC ;
5. Insertion and extraction force: 5-30N;
6. life test: 5,000 cycles.



RECOMMENDED PLUG  
Rating : DC 24V 7A



RECOMMENDED PLUG  
Rating : DC 24V 10A

6	HOUSING	1	PA9T	
5	SHELL	1	BRONZE/IRON	Ni-Plating
4	COAT	1	SUS301	N/A
3	PEG	1	BRASS	N/A
2	PIN	1	ZINC ALLOY	Ni-Plating
1	SPRING PIECE	1	BRONZE	Ag-Plating
NO.	DESCRIPTION	QTY	MATERIAL	PLATING
UNIT:MM		TYPE:		MODEL NO:
		DC JACK		DC-D220
DESIGNER BY:		PAPER NO: A4		PAGE 1 OF 1
CHECK BY:		TOLERANCE		ANGLES
APPROVED BY:		±0.15		±1.5°
		SCALE		VER
		3:1		2
<b>H D C 有限公司</b>				

1

2

3

4

5