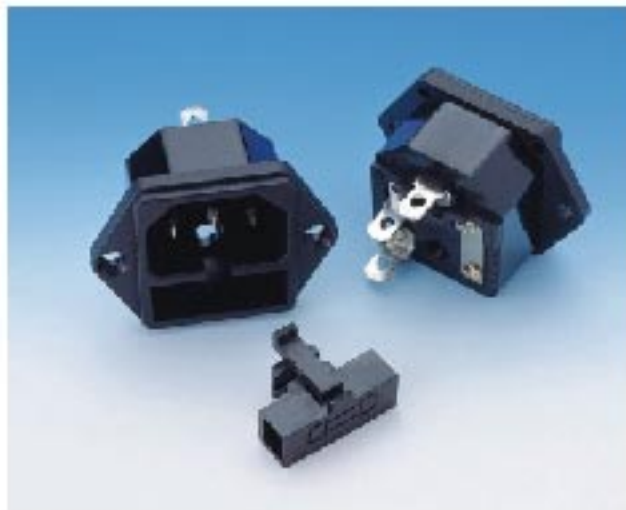


POWER INLET 5x20MM FUSE HOLDER



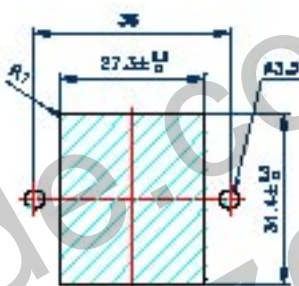
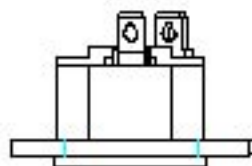
RF-2004-C

STANDARD: IEC 320-1 C14

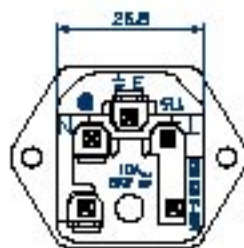
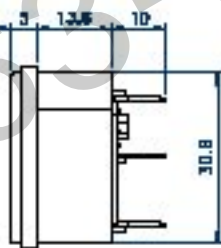
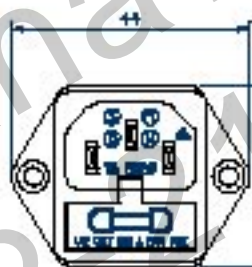
STANDARD: IEC 320-1 C14

RATING : 10A 250V AC

APPROVALS: UL/CSA/VDE/DEMKO/
NEMKO/SEMKO/FIMKO



PANEL CUTOUT DIMENSION TABLE



RF-2004-C-	6.3	
	6.3	
	4.8	
	4.0	
	2.8	