

AC SOCKET



SS-7B-1-A

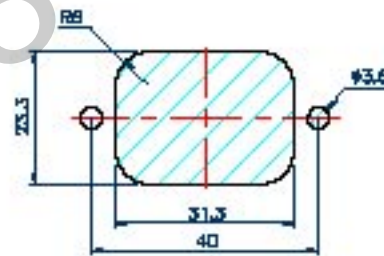
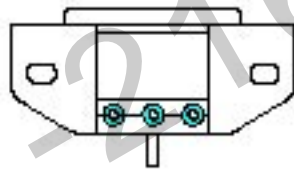
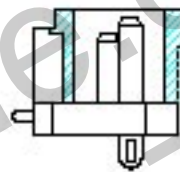
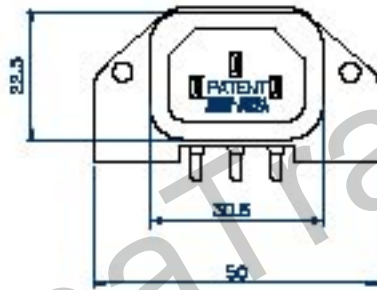
STANDARD : IEC 320 C14

RATING : 15A 250V AC

APPROVALS : UL/CSA

RATING : 10A 250V~

APPROVALS : VDE/DEMKO/NAMKO/ SEV/
SEMKO/FIMKO/KEMA/ CCEE



Panel Cut-Out



PCB Layout