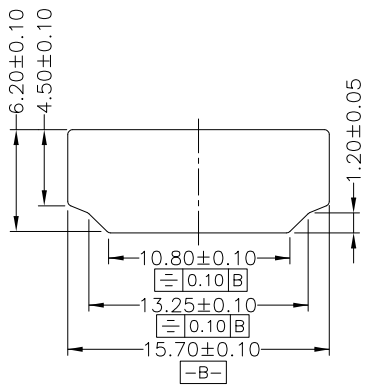
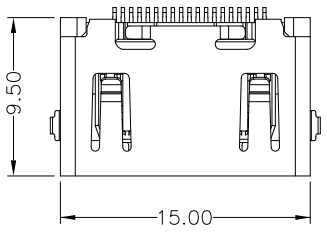
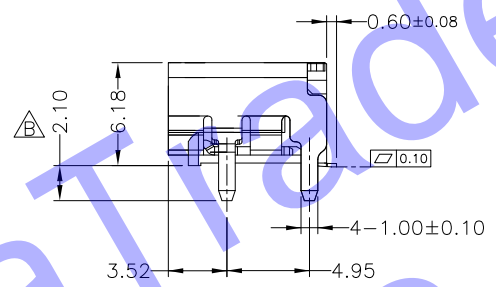
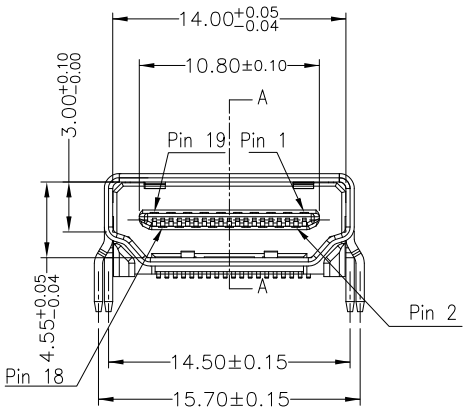


8 7 6 5 4 3 2 1

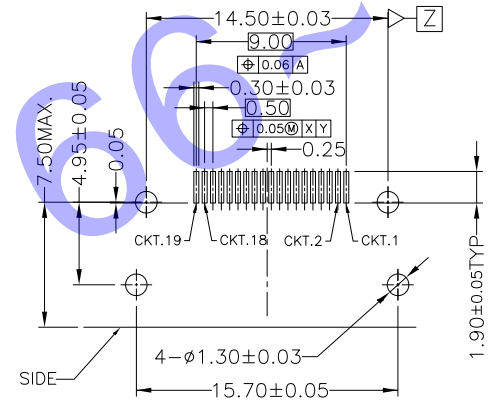
H
G
F
E
D
C
B
A



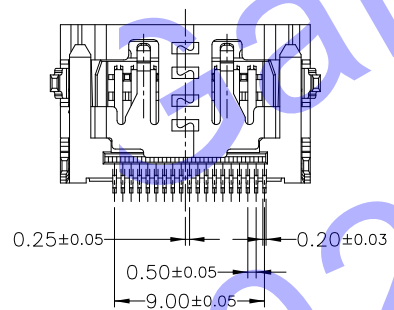
RECOMMENDED PANEL CUT OUT DIMENSION



NOTE:
 1..MECHANICAL CHARACTERISTICS
 INSERTION FORCE: 44.1N MAX
 EXTROCTION FORCE: 9.8N MIN, 39.2N MAX
 MATING CYCLE:10000 CYCLES
 2.ELECTRICAL CHARACTERISTICS
 RATING CURRENT: 0.5A
 RATING VOLTAGE: 40V
 CONTACT RESISTANCE: 30 MILLOHMS OHMS MAX
 INSULATION RESISTANCE:100M OHMS MIN
 DIELTRIC WITHSTANDING VOLTAGE: 300V AC/1MINUTE
 OPERATING TEMPERATURE: -20°C--+85°C
 STORAGE TEMPERATURE: -20°C--+65°C



Reconnened PCB Lay-out Connector side
 (General Tolerance: +/-0.05)



| | | | |
|---|----------|--------------------------|--|
| 3 | Terminal | Copper Alloy T=0.20mm | Contact Area: Au 1U" Soldertail Area: Sn 80u" Under-Plating: Ni 30u" |
| 2 | Shell | Copper Alloy T=0.50mm | Over-Plating: Ni 40u" |
| 1 | Housing | LCP+30%G.F., UL 94V-0 | Color:Black |

| | | | | | | | | | | | |
|---|-----|---------------------|------------|-----------------|-----------------|---------|-------------|----------|---------|----------|-------------|
| A | REV | DESCRIPTION | DATE | QUALITY SYMBOLS | UNIT | SCALE | TOLERANCES | ITEM | DESC | MATERIAL | REMARKS |
| | B | Modify Shell Length | 11-05-2013 | ■ : CRITICAL | mm | 2.5 : 1 | DIM. ± 0.20 | APPROVED | CHECKED | DESIGN | PART NO. |
| | A | NEW | 01-18-2013 | ⊠ : MAJOR | | | ANGLE: 3° | | | | DESCRIPTION |
| | | | | | ▽ : ZERO DEFECT | | | | | | DRAWING NO. |

H D C 有限公司

8 7 6 5 4 3 2 1

H
G
F
E
D
C
B
A