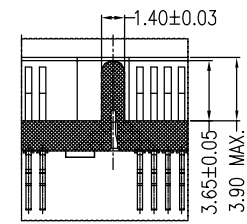
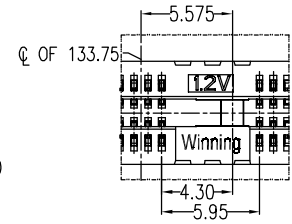
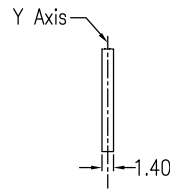
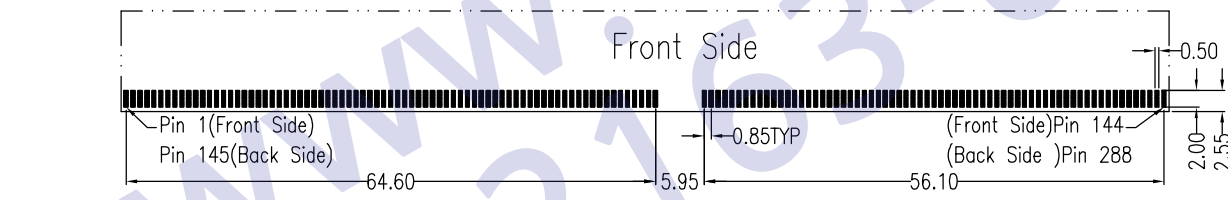
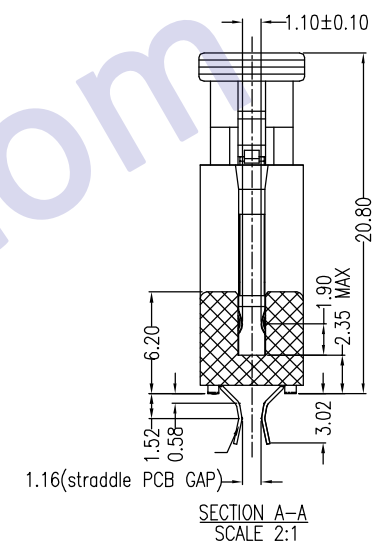
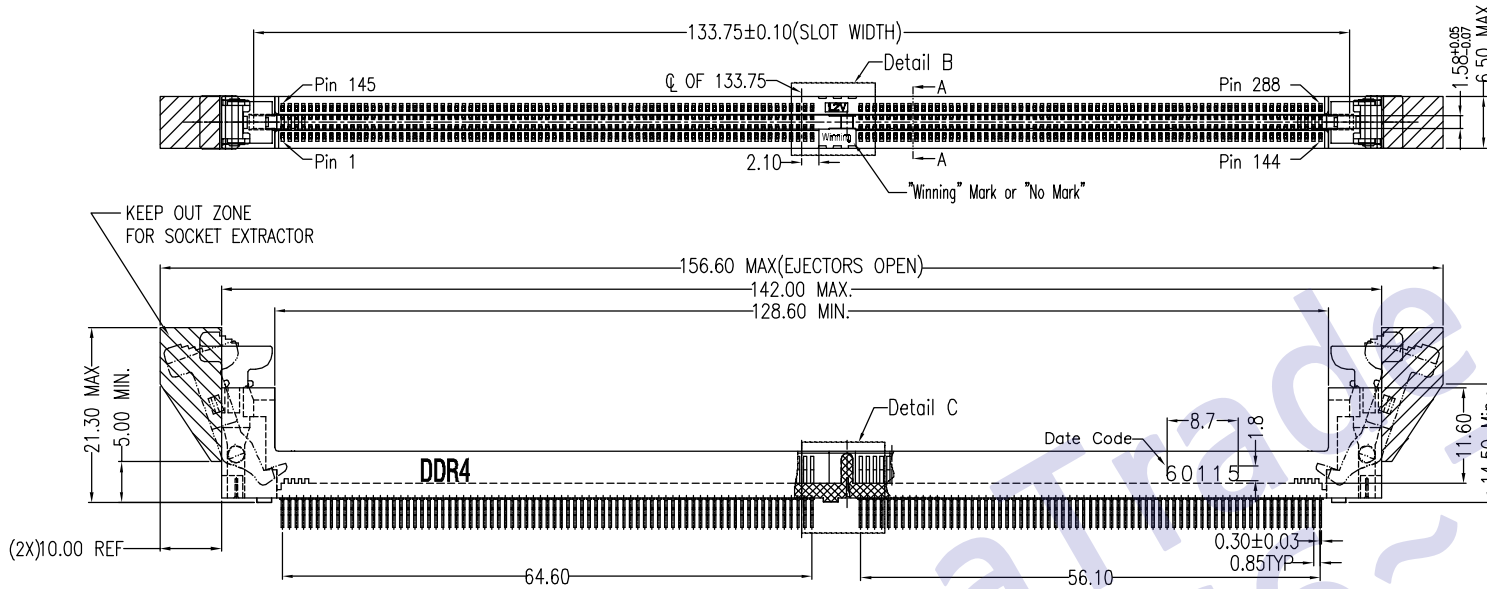


REV.	ECN.NO.	DATE
A	RELEASED	05/12-'14

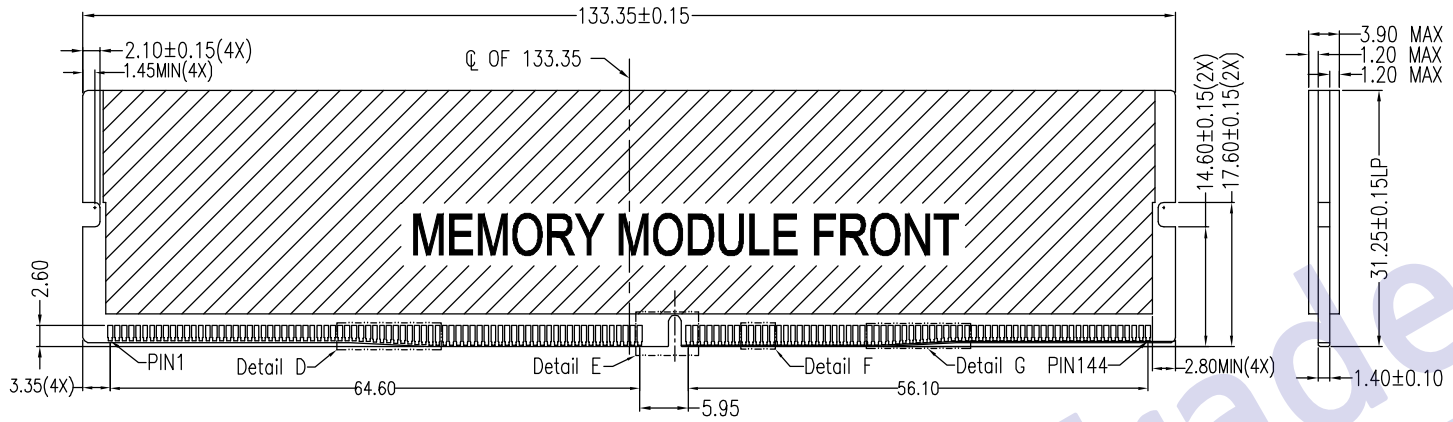


Recommended PCB Layout Thickness=1.40mm Tolerance:±0.05  
Both Front and Back Side PADS are Mirror Relation Related to Y Axis

DATE CODE	DESCRIPTION
60115	Friday 11 Weeks Year Winning

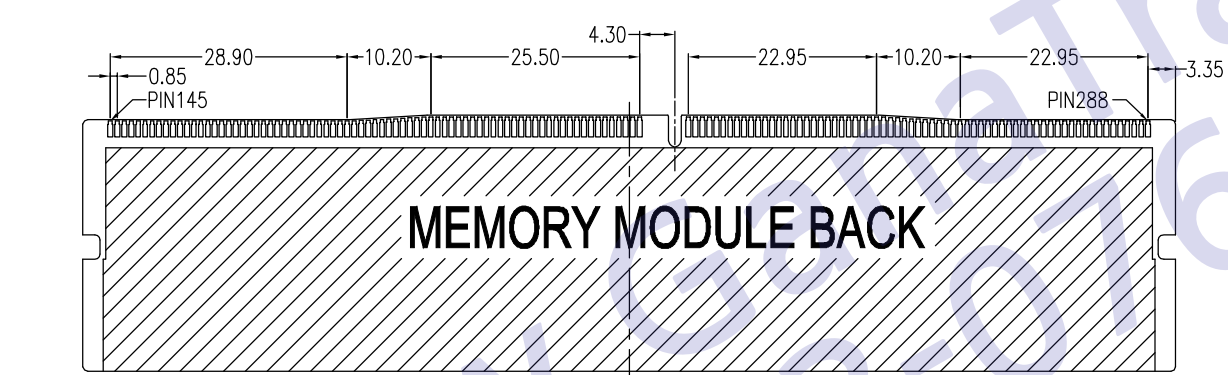
REV				Drawing By		Date			
Units	mm	Scale	1:1	Rainy	05/12-'14				
Tolerance Unless Otherwise Specified				Reviewed By	Date	Date	05/12-'14	Title	DDR4-288P 0.85mm Pitch Straddle Ejector Type with clasp
.X ~ ±0.35				Rosh	05/12-'14	Sheet	1 of 2		
.XX ~ ±0.25				Approval By	Date	Third Angle Projection		Drawing No.	WDD4S-288PS-AN-W114
.XXX ~ ±0.15				Richard	05/13-'14			REV	A
Angle ~ ± 3°									

REV.	ECN.NO.	DATE
A	RELEASED	05/09-'14

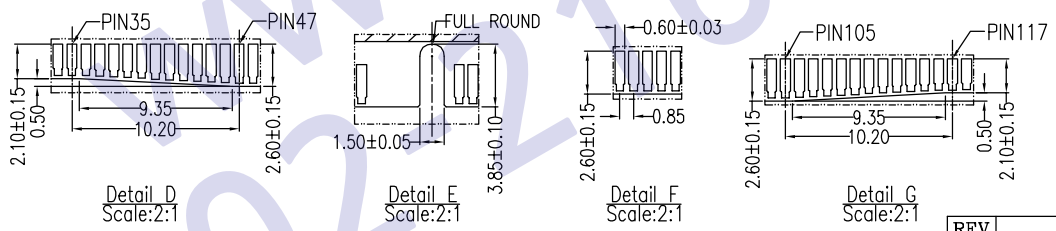


**NOTES**

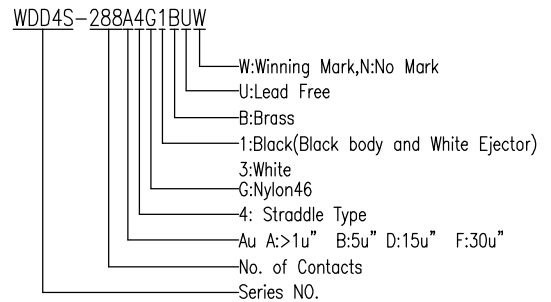
- \*MATERIAL:**  
 Body: Nylon46, UL 94V-0 rated,color:selective;  
 Ejector: Nylon66,UL 94V-0 rated,color:selective;  
 Contact: Copper alloy;  
 Plating: Au Plating on contact area  
 Sn(100u"Min) plating on solder Tail  
 Ni(50u"Min) contact underplating overall.
- \*MECHANICAL:**  
 Contact Retention Force: 300 Grams Min. Per Pin;  
 Insertion Force: 10.88Kgf Max. With Module Thickness 1.50mm;  
 Unmating Force: 14gf Min. Per Pin Pair With Module Thickness 1.30mm;  
 Durability: 25 cycles;
- \*ELECTRICAL SPECIFICATION**  
 Contact Resistance: 10mΩ Max. Initial ,Change Value to 20mΩ Max;  
 Insulation Resistance: Apply 500V DC 1MΩ Min. ;  
 Withstand Voltage: 500V AC.
- \*ENVIRONMENTAL:**  
 Solderability: Compliance with EIA-364-52,Class 2,Category 3;  
 Vibration: Compliance with EIA-364-28;  
 Humidity: Compliance with EIA-364-21;  
 Thermal shock: Compliance with EIA-364-32;  
 Operating Temperature: -55°C TO +105°C;  
 Mechanical shock: Compliance with EIA-364-27.



Recommended Memory Module Layout



**\*How To Order**



REV				Drawing By		Date			
Units	mm	Scale	1:1	Rainy		05/12-'14			
Tolerance Unless Otherwise Specified				Reviewed By		Date		Date	05/12-'14
.X ~ ±0.35				Rosh		05/12-'14		Sheet	2 of 2
.XX ~ ±0.25				Approval By		Date		Title	
.XXX ~ ±0.15				Richard		05/13-'14		DDR4-288P 0.85mm Pitch Straddle Ejector Type with clasp	
Angle ~ ± 3°								Third Angle Projection	
								Drawing No.	WDD4S-288PS-AN-W114
								REV	A