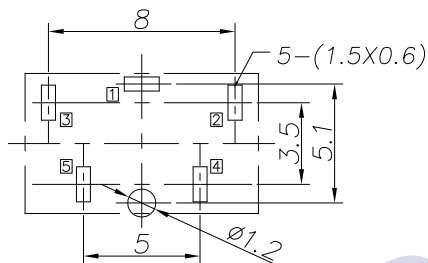
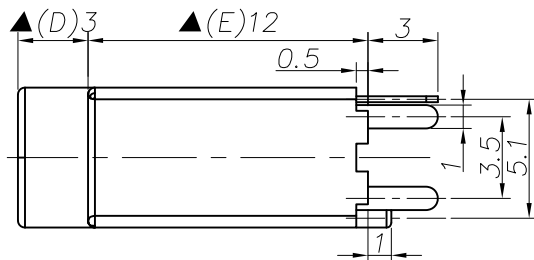
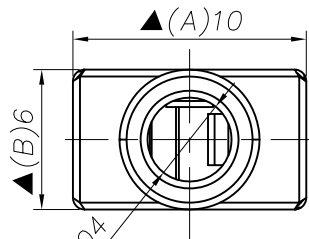
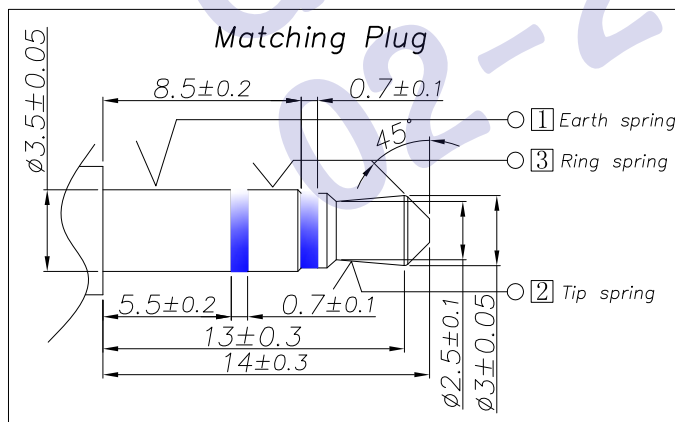
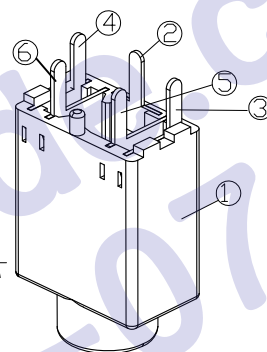
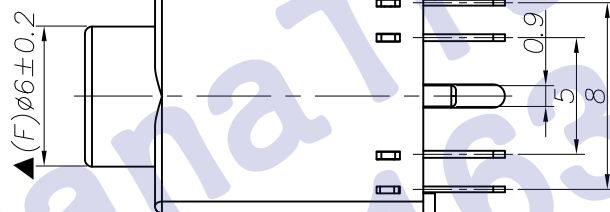


Model NO.	PJ30580-A	PJ30580-B	PJ30580-C	PJ30580-D	PJ30580-E	PJ30580-F
Schematic						

□ : TERMINAL NO.



RECOMMENDED P.C.B. LAYOUT
UNSPECIFIED TOLERANCE: ±0.05
(BOTTOM VIEW)



REV. LTR.	DESCRIPTION	SIGN	DATE
-----------	-------------	------	------

Ordering information:
PJ30580 ? PB?? ? 00 ?
? ? ? ? ? ? ? ?

- ? : Series No.
- ? : Schematic option: A B C D E F
- ? : Material of housing:
PB=PBT(Standard)
- ? : Housing color:
Zero 0A=Black
2K=Red(0225) 5W=Green(0224)
6A=Blue(284C) 9A=White(0100)
- ? : Terminal plating
S=Silver(Ag)(Standard) T=Tin(Sn) G=Gold(Au)
- ? : Special option:
00=No special option
- ? : Packing mode:
3=Plastic box packing
4=Bag packing

Specification:

1. Rating : DC 30V 0.5A.
2. Contact resistance: $\leq 50m\Omega$.
After test: $\leq 100m\Omega$.
3. Insulation resistance: $\geq 100M\Omega$ (500VDC).
After test: $\geq 50M\Omega$.
4. Withstanding voltage: 500VAC.
5. Insertion and extraction force: 3N~30N.
6. life test: 5000cycles min.
7. Operation temperature range: $-20^{\circ}C \sim 70^{\circ}C$.
8. Preservative temperature range: $-40^{\circ}C \sim 85^{\circ}C$.
9. Sign "▲" is importance dimension.

⑥	Shunt terminal ⑤	1	Brass t0.3	PJ30580-05(PP-989)	Silver Plating 0.5um / Tin Plating? 2um / Gold Flash 0.025um
⑤	Shunt terminal ④	1	Brass t0.3	PJ30580-04(PP-988)	Silver Plating 0.5um / Tin Plating? 2um / Gold Flash 0.025um
④	Ring spring ③	1	Stainless steel t0.25	PJ30580-03(TP-987)	Silver Plating 0.5um / Tin Plating? 2um / Gold Flash 0.025um
③	Tip spring ②	1	Phosphor bronze t0.25	PJ30580-02(TP-986)	Silver Plating 0.5um / Tin Plating? 2um / Gold Flash 0.025um
②	Earth spring ①	1	Stainless steel t0.25	PJ30580-01(JA-990)	Silver Plating 0.5um / Tin Plating? 2um / Gold Flash 0.025um
①	Housing	1	PBT UL-94V-0	PJ30580-S1(ST-985)	

NO.	DESCRIPTION	QTY	MATERIAL	PART NO.	REMARK
-----	-------------	-----	----------	----------	--------

UNIT:MM	TYPE:	MODEL NO:	PAPER NO: A4	PAGE 1 OF 1
	3.5 PHONE JACK (180° Dip type)	PJ30580- _PB_ _	TOLENANCE: ±0.3	ANGLES: ±2°
DESIGNER BY:	JP.K 2011.7.18	SCALE: N/A	VER: 05	
CHECK BY:	Michael 2011.7.18			
APPROVED BY:	Ocean 2011.7.18			

HDC有限公司