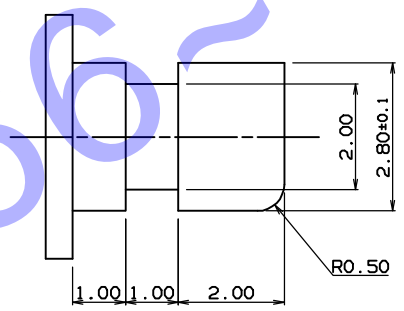
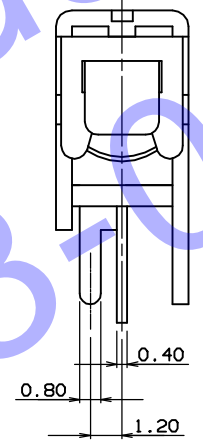
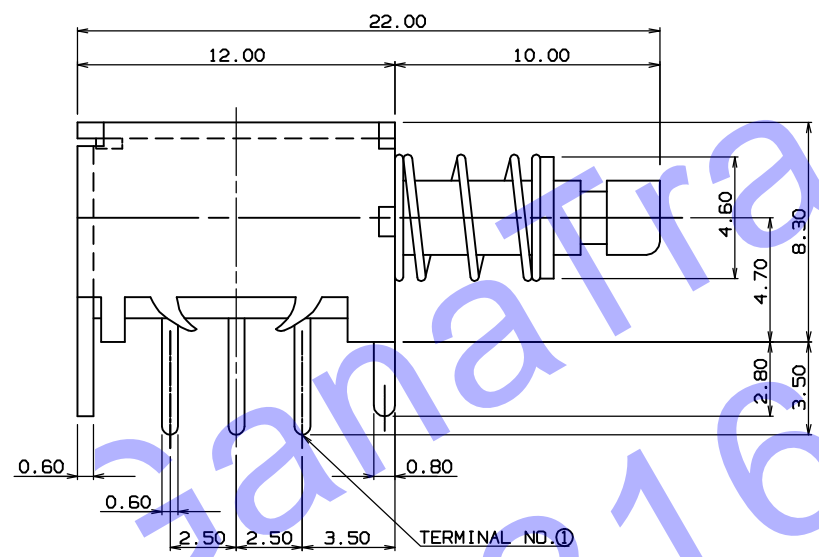
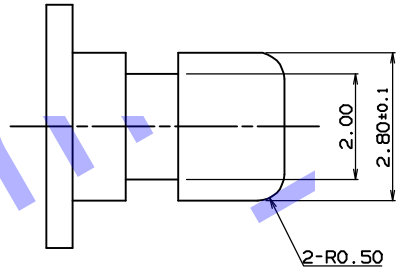
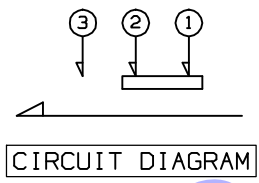
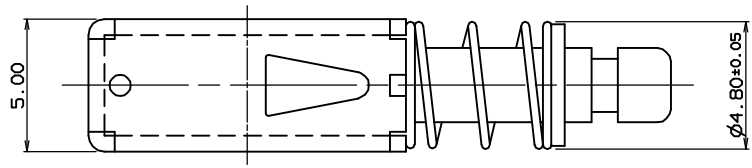


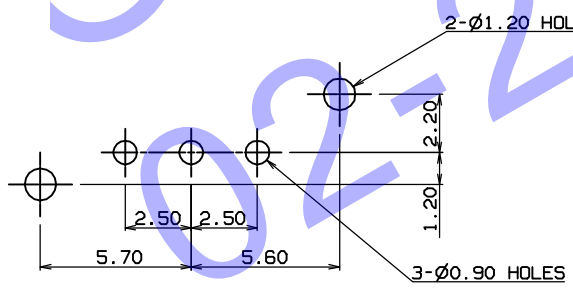
MODEL	CODE NO	OPERATING FORCE	TRAVEL	PUSH COLOR
JPS 1258	14105000	SELF LOCK	FULL : 3.5 LOCK : 2.5	BLUE
JPS 1258N	14109000	NON LOCK	FULL : 3.5	BLACK



DETAIL OF KNOB(10/1)

NOTES

1. OPERATING FORCE : 230±100gf
2. CIRCUIT : 1C-2P
3. GENERAL TOLERANCE : ±0.3
4. TIMING : NON SHORTING
5. MANUFACTURING SPECIFICATION WOULD BE ACCORDANCE WITH JP0101



P.C.B MOUNTING HOLE DIMENSION

No.	PART NAME	Q'TY	MATERIAL	SIZE	TREAT.	REMARKS
3RD ANGLE PROJECTION	UNIT	SCALE	MODEL			
APPROVED	m/m	5/1	JPS 1258			
CHECKED	DESIGNED	DWG. NAME				
			ASS'Y DIAGRAM			
			DWG. NO.			
			CODE NO.			
NO.	DATE	NOTE	SIGN			