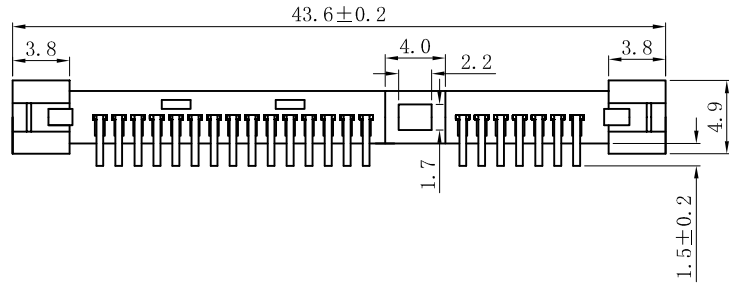
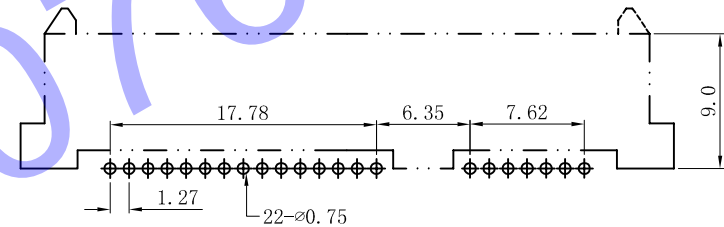
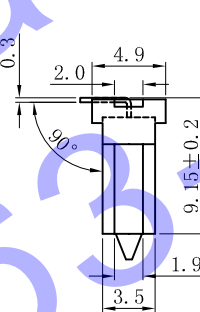
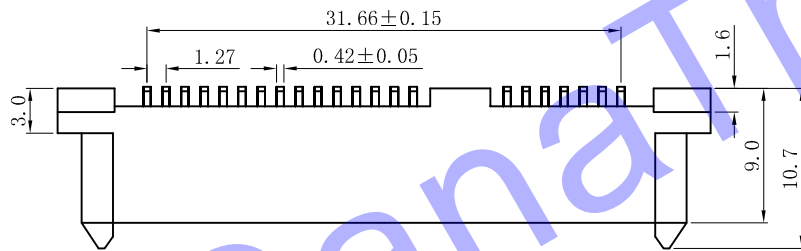


版本	变更内容	变更人	日期
A			



SPECIFICATIONS

MATERIAL:  
 HOUSING: LCP UL94V-0  
 COLOR: BLACK  
 CONTACT: PHOSPHOR BRONZE  
 PEG: BRASS  
 FINISH: CONTACT: 3U" GOLD/TIN PLATING ON CONTACT AREA  
 100U"MIN. TIN-LEAD PLATING ON SOLDER TAILS  
 50U"MIN. NICKEL UNDERPLATING OVER ALL.  
 PEG: 100U"MIN. TIN-LEAD PLATING ON SOLDER TAILS  
 50U"MIN. NICKEL UNDERPLATING OVER ALL.



RECOMMEND PCB LAYOUT

X.	±0.3	X.*	±1.0°	客户:	产品名称: SATA 7+15 夹板胶芯90°	HDC ELECTRONICS CO., LTD.				
.X	±0.25	.X*	±0.5°							
.XX	±0.2	.XX*	±0.2°	单位: MM	产品料号: GSTA - 715F - 01	核准:	日期:			
.XXX	±0.05	.XXX*	±0.1°			审核:	日期:			
				材质:	图号:	数量:	比例: 1:1	版次: A	设计: 康春香	日期: 09-07-10