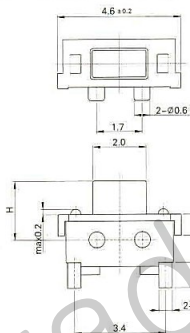
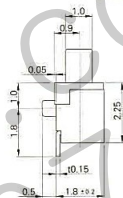


# 1121K



### STEM HEIGHT

Model No.	H(mm)
1121KA	1.5
1121K	2.2



### SPECIFICATION

1. RATING : DC 12V 50mA
2. CONTACT RESISTANCE : 100mΩ MAX.
3. TRAVEL : 1.20 ± 0.1mm
4. BOUNCE : 20m SEC MAX.

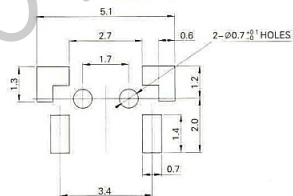
5.

MODEL	OPERATING FORCE	LIFE CYCLES
1121K-2	160 ± 50gf	100,000 CYCLE

### CIRCUIT DIAGRAM



### P.C.B LAND PATTERN



PACKING

REEL TYPE

3,000/1REEL(EA)

