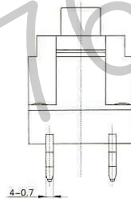
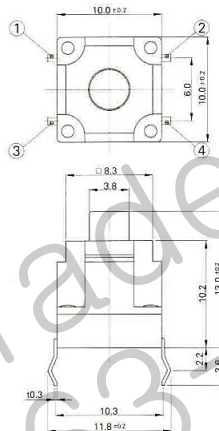
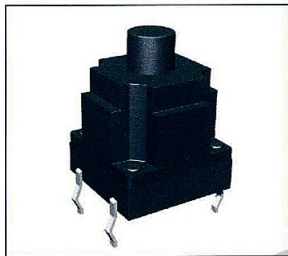


1147

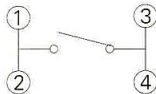


SPECIFICATION

1. RATING : DC 12V 50mA
2. CONTACT RESISTANCE : 100mΩ MAX.
3. TRAVEL : 0.3 ± 0.1 mm
4. BOUNCE : 10m SEC MAX.
- 5.

MODEL	OPERATING FORCE	LIFE CYCLES
1147-2	160 ± 50 gf	100,000 CYCLE
1147-3	250 ± 50 gf	100,000 CYCLE

CIRCUIT DIAGRAM



P.C.B MOUNTING HOLES

