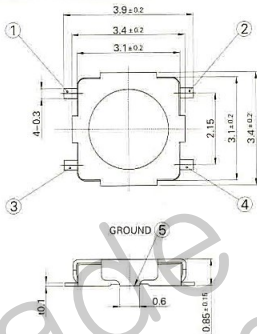
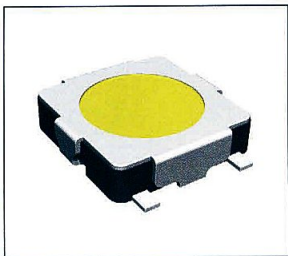


# 1188M

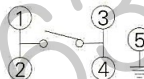


## SPECIFICATION

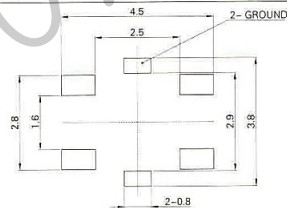
1. RATING : DC 12V 50mA
2. CONTACT RESISTANCE : 100mΩ MAX.
3. TRAVEL : 0.2 ± 0.1mm
4. BOUNCE : 10m SEC MAX.
- 5.

MODEL	OPERATING FORCE	LIFE CYCLES
1188M-2	160 ± 50gf	200,000 CYCLE
1188M-3	250 ± 50gf	100,000 CYCLE

## CIRCUIT DIAGRAM



## P.C.B LAND PATTERN



PACKING

REEL TYPE

4,000/1REEL(EA)

