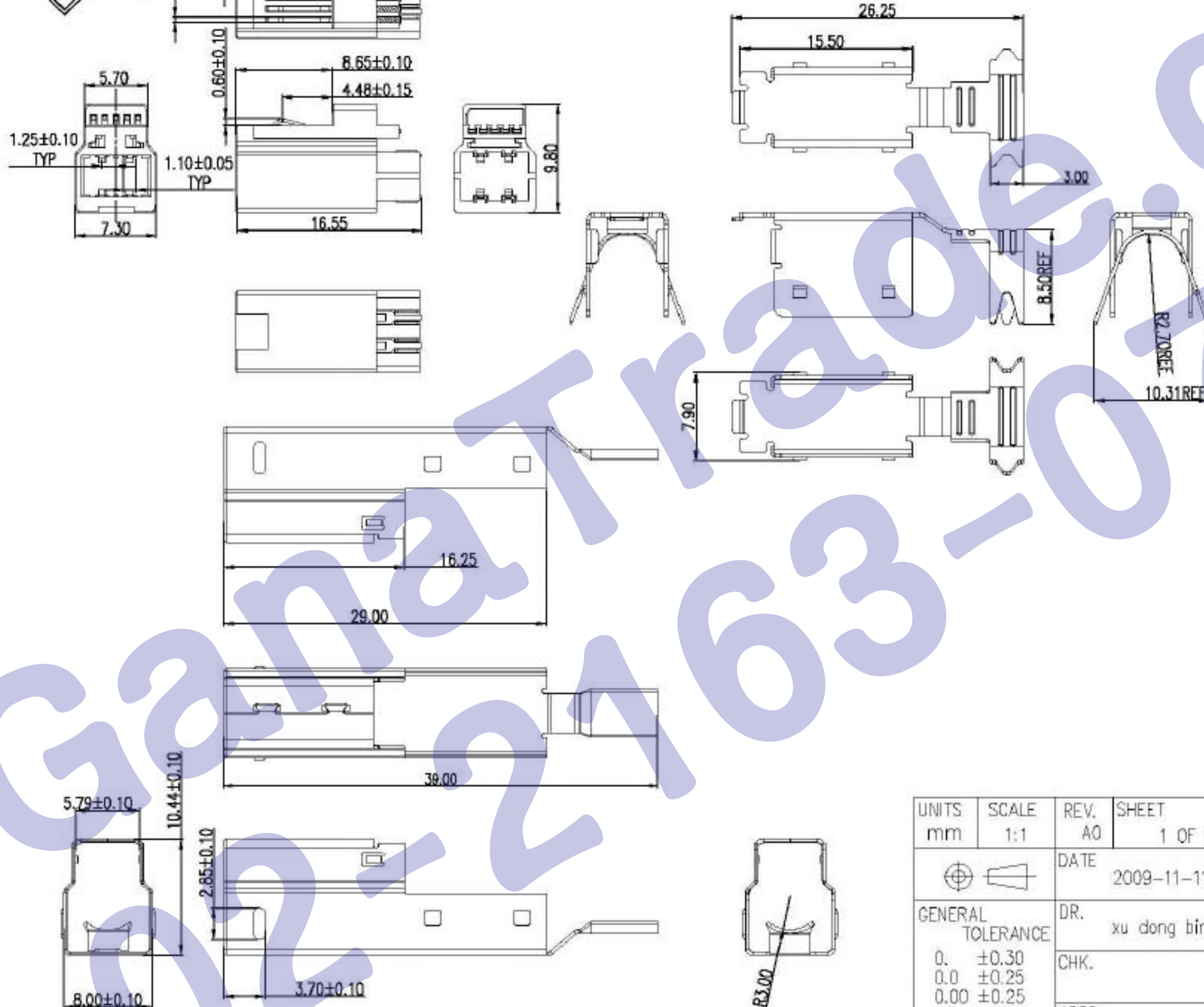




REV.	ECN NO.	DESCRIPTION	DRAW	CHECK	APPD.	DATE
A0	ECN0911110059	新发行	xu dong bin	—	David	09-11-11



NOTES:

- MECHANICAL:
  - MATING: 35N MAX.
  - WITHDRAWAL: 10N MIN.
  - DURABILITY: 1500 CYCLES MIN.
- ELECTRICAL:
  - CURRENT: 1.8A MAX For Pin1 And Pin4 and 0.25A for all the other pins.
  - VOLTAGE: 30V MAX
  - WITHSTANDING VOLTAGE: 100V AC
  - CONTACT RESISTANCE: 30 mΩ MAX
  - INSULATION RESISTANCE: 100MΩ MIN
- ENVIRONMENTAL
  - TEMPERATURE RANGE -55°C ~ +85°C
- OTHER:
  - PRODUCT MEET ROHS STANDARD

UNITS mm	SCALE 1:1	REV. A0	SHEET 1 OF 2	HDC 有限公司	
DATE 2009-11-11					
GENERAL TOLERANCE				DR. xu dong bin	
0. ±0.30				CHK.	
0.0 ±0.25				APPD.	
0.00 ±0.25				MAT'L SEE TABLE	
0.* ±4°				FINISH SEE TABLE	
0.0° ±2°				DWC.NO. DWC-USB BM-003	
				PART NO. SEE TABLE	
				SIZE A4	