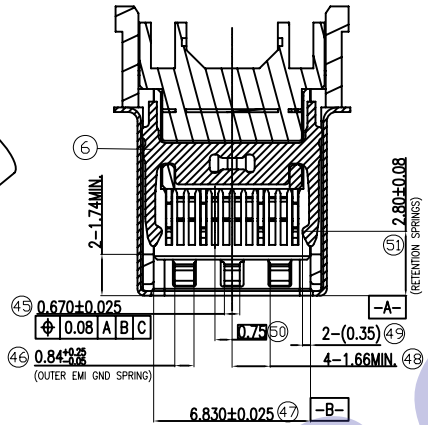
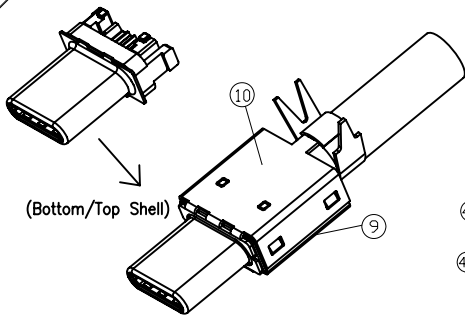


|      |         |                 |           |       |       |            |
|------|---------|-----------------|-----------|-------|-------|------------|
| REV. | ECN NO. | DESCRIPTION     | DRAW      | CHECK | APPD. | DATE       |
| A0   |         | INITIAL RELEASE | MOJINTANG |       |       | 2015-01-24 |



NOTES:  
 1.MECHANICAL:  
 INSERTION: 5~20N.  
 EXTRACTION: 8~20N.  
 DURABILITY: 10000 CYCLES  
 2.ELECTRICAL:  
 CURRENT: 5A MIN FOR VBUS;  
 0.25A MIN FOR OTHER.  
 VOLTAGE: 250VAC MAX  
 WITHSTANDING VOLTAGE: 100V AC.  
 CONTACT RESISTANCE: 40 mΩ MAX.  
 INSULATION RESISTANCE: 100MΩ MIN.  
 3.ENVIRONMENTAL  
 TEMPERATURE RANGE -55°C ~ +85°C

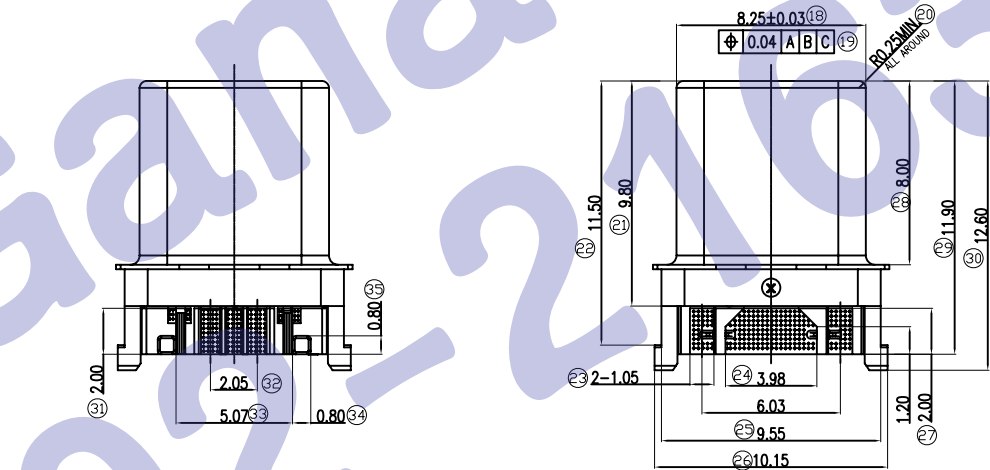
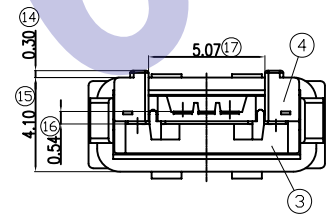
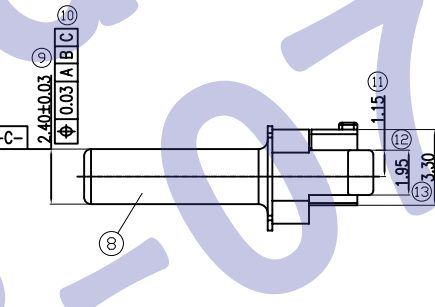
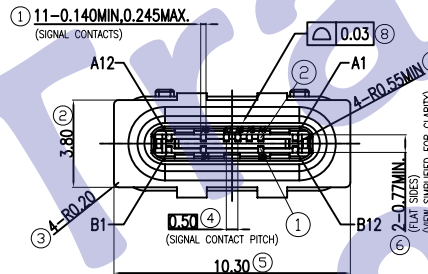
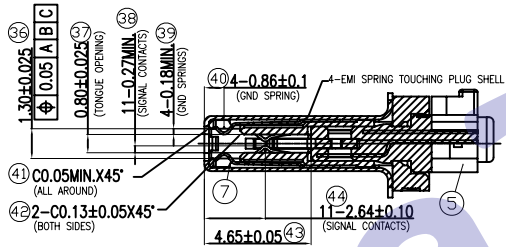
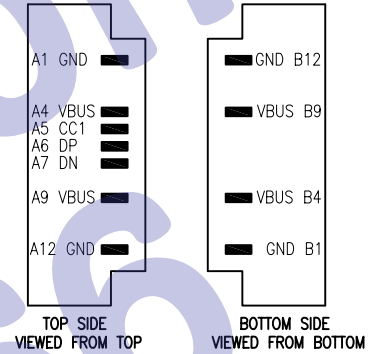


TABLE:

| PRODUCT NO. | ITEM | PART NO.      | PART NAME    | Q'TY | MATERIAL                                     |
|-------------|------|---------------|--------------|------|--|
| CNH013S130T | 1    | PS113B6470    | 4PIN CONTACT | 1    | NKC388R-SH, Au30u"Min.Ni50~80u".Sn120u"Min.  |
|             | 2    | PS113B6480    | 7PIN CONTACT | 1    | NKC388R-SH, Au30u"Min.Ni50~80u".Sn120u"Min.  |
|             | 3    | CNH010S1301   | 4PIN MOLDING | 1    | LCP+30%GF, BLACK                             |
|             | 4    | CNH011S1301   | 7PIN MOLDING | 1    | LCP+30%GF, BLACK                             |
|             | 5    | PP101B9750    | HOUSING      | 1    | LCP+30%GF, BLACK                             |
|             | 6    | PS224B9700-WW | LATCH        | 1    | SUS304R-1/2H T=0.40,Ni 100u"Min;Sn 100u"Min. |
|             | 7    | PS100B6390    | EMI          | 2    | SUS304R-1/2H, NO PLATING                     |
|             | 8    | PS208B9390    | SHELL        | 1    | SUS304R-1/2H, NICKEL 50U"MIN                 |
|             | 9    | PS224B9680    | BOTTOM SHELL | 1    | SUS304R-1/2H, NICKEL 50U"MIN                 |
|             | 10   | PS208B9690    | TOP SHELL    | 1    | SUS304R-1/2H, NICKEL 50U"MIN                 |

|                   |       |                 |        |                             |  |           |
|-------------------|-------|-----------------|--------|-----------------------------|--|-----------|
| UNITS             | SCALE | REV.            | SHEET  | TITLE                       |  |           |
| MM                | 1:1   | A0              | 1 OF 1 |                             |  |           |
| DATE              |       | 2015-01-24      |        | USB C TYPE 2.0 PLUG(大电流三件式) |  |           |
| GENERAL TOLERANCE |       | DR. MO JIN TANG |        |                             |  |           |
| 0. ±0.35          |       | CHK.            |        | MAT'L                       |  | FINISH    |
| 0.0 ±0.35         |       | APPD.           |        | SEE TABLE                   |  | SEE TABLE |
| 0.00 ±0.25        |       |                 |        | DWG.NO.                     |  | PART NO.  |
| 0.° ±4°           |       |                 |        | DWG-USB CM-003              |  | SEE TABLE |
| 0.0° ±3°          |       |                 |        | A                           |  | SIZE      |
|                   |       |                 |        |                             |  | A4        |