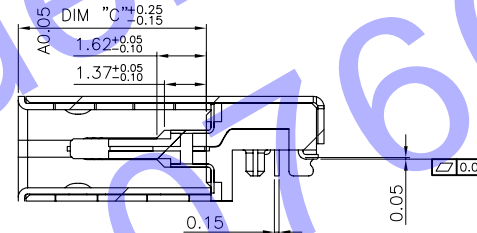
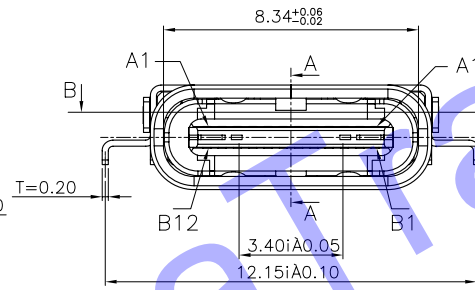
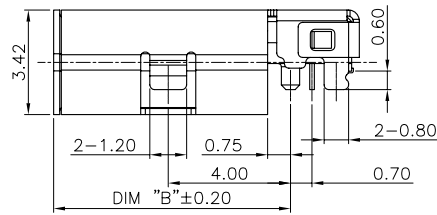
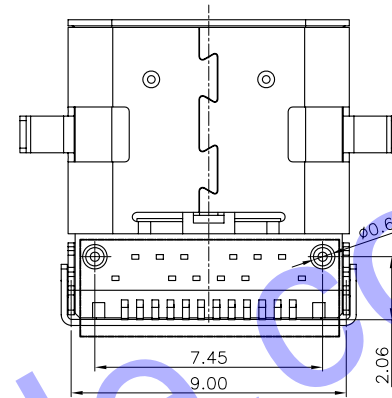
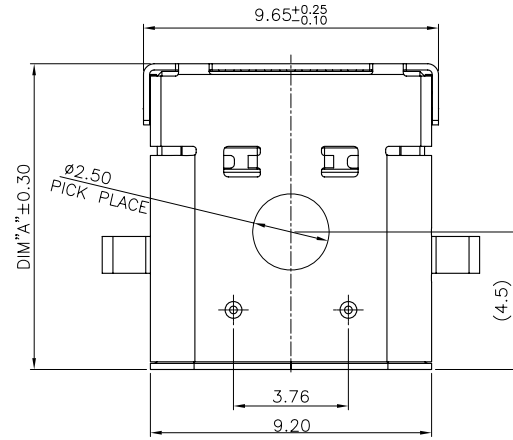


1.MATERIAL:
 MOLDING: LCP UL94 V-0
 CONTACT: COPPER ALLOY.
 GOLD PLATED ON CONTACT AREA, 100u"
 Min TIN (LEAD FREE) ON SOLDER AREA,
 SHELL: SUS304-H, T=0.30±0.03mm
 50u" NICKEL PLATING OVER ALL.

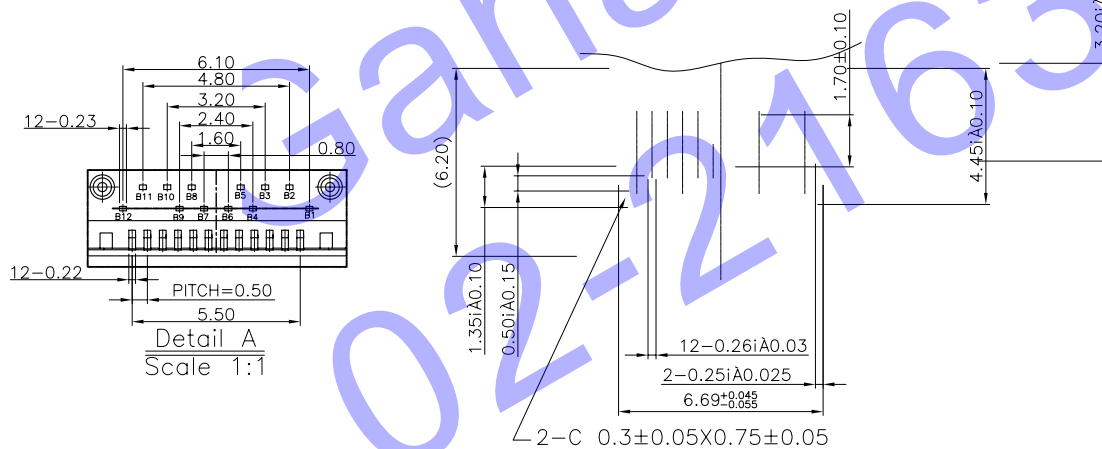
2.MECHANICAL:
 INSERTION: 5~20N.
 EXTRACTION: 8~20N.
 DURABILITY: 5000 CYCLES

3.ELECTRICAL:
 CURRENT: 3A MIN FOR VBUS;

VOLTAGE: 5VAC MAX
 WITHSTANDING VOLTAGE: 100V AC.
 CONTACT RESISTANCE: 40mΩ MAX.
 INSULATION RESISTANCE: 100MΩ MIN.
 4.ENVIRONMENTAL
 TEMPERATURE RANGE -55°C ~ +85°C



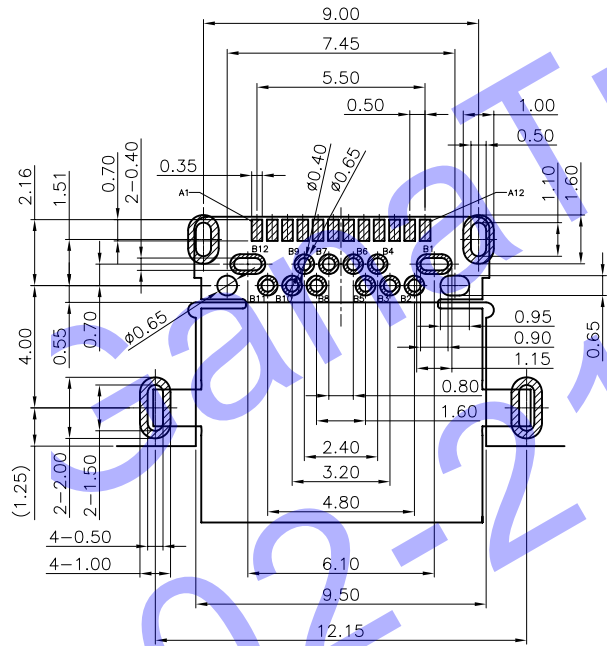
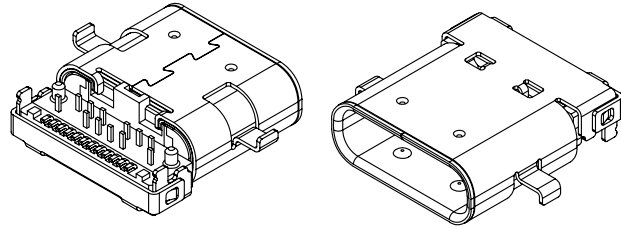
NO	DIM A	DIM B	DIM C
1	10.0	7.75	6.2
2	8.65	6.4	4.85
3	--	--	--



Detail A
Scale 1:1

UNITS	SCALE	REV.	SHEET	HDC 有限公司	
mm	1:1	B3	1 OF 1	TITLE	
DATE				2018.05.25	
GENERAL TOLERANCE				DR. Apovi	
0. ±0.38				CHK. Apovi	
0.0 ±0.25				APPD. ZHUFAGUI	
0.00 ±0.20				DWG.NO.	
0.° ±4°				A	
0.0° ±2°				PART NO. UC-026-003	
				FINISH SEE TABLE	
				SIZE A4	

0212163-0166

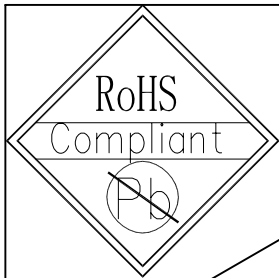


RECOMMEND P.C.B LAYOUT (COMPONENT SIDE)
TOLERANCE FOR PCB LAYOUT IS ± 0.05

USB TYPE-C FULL-FEATURED RECEPTACLE INTERFACE PIN ASSIGNMENTS

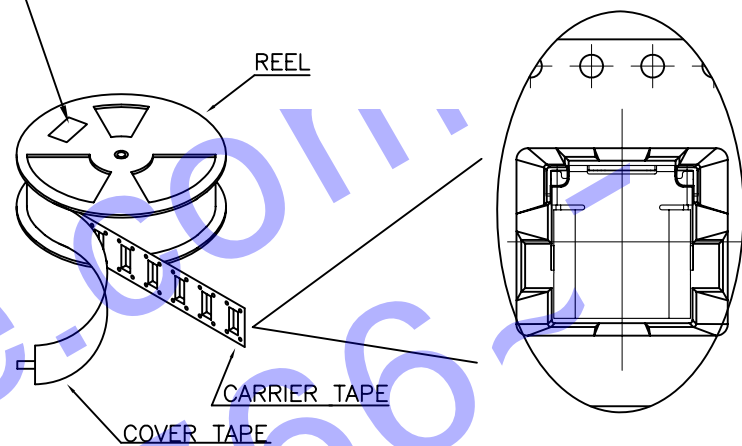
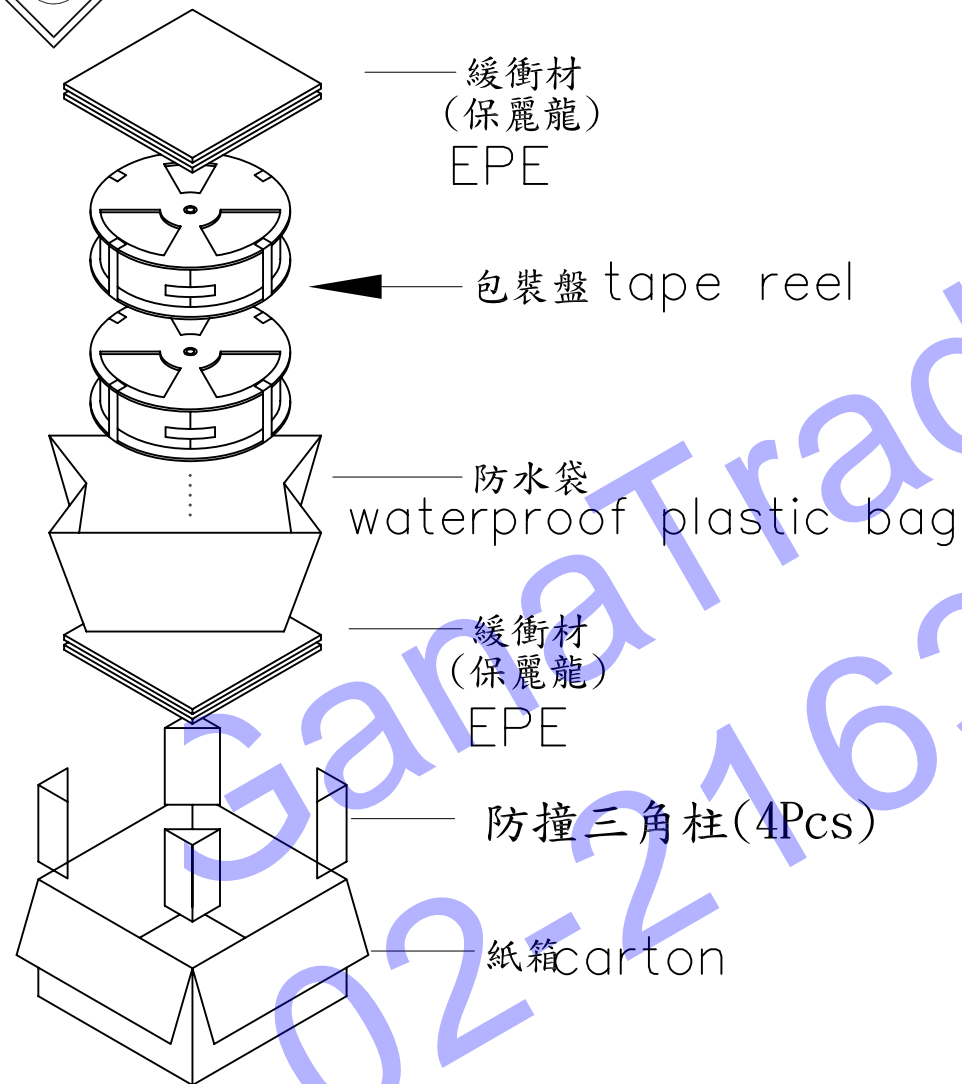
PIN	Signal Name	Description	PIN	Signal Name	Description
A1	GND	Ground return	B12	GND	Ground return
A2	SSTXp1	Positive half of first SuperSpeed TX differential pair	B11	SSRXp1	Positive half of first SuperSpeed RX differential pair
A3	SSTXn1	Negative half of first SuperSpeed TX differential pair	B10	SSRXn1	Negative half of first SuperSpeed RX differential pair
A4	VBUS	Bus Power	B9	VBUS	Bus Power
A5	CC1	Configuration Channel	B8	SBU2	Sideband Use (SBU)
A6	Dp1	Positive half of the USB 2.0 differential pair-Position 1	B7	Dn2	Negative half of the USB 2.0 differential pair-Position 2
A7	Dn1	Negative half of the USB 2.0 differential pair-Position 1	B6	Dp2	Positive half of the USB 2.0 differential pair-Position 2
A8	SBU1	Sideband Use (SBU)	B5	CC2	Configuraation Channel
A9	VBUS	Bus Power	B4	Vbus	Bus Power
A10	SSRXn2	Negative half of second SuperSpeed RX differential pair	B3	SSTXn2	Negative half of second SuperSpeed TX differential pair
A11	SSRXp2	Positive half of second SuperSpeed RX differential pair	B2	SSTXp2	Positive half of second SuperSpeed TX differential pair
A12	GND	Ground return	B1	GND	Ground return

UNITS mm	SCALE 1:1	REV. B3	SHEET 1 OF 1	H D C 有限公司	
DATE 2018.05.25					
GENERAL TOLERANCE 0. ±0.30 0.0 ±0.20 0.00 ±0.15 0.° ±4° 0.0° ±2°		DR. Apovi		MAT'L SEE TABLE	
		CHK. Apovi		FINISH SEE TABLE	
		APPD. ZHUFAGUI		DWG.NO.	PART NO. UC-026-003
				A	SIZE A4



at small positioning hole of the carrier tape side).
 標籤黏貼處 (朝捲裝包材的小定位孔一側)

Location of label sticking label



NOTE:

1. Packing q'ty of each reel & carton as below table shown.
2. Use cover tape to cover and hot melt machine to seal up.
3. Every carton use 2pcs EPE.
4. Put reels in the carton and use adhesive tape to seal up.

(PRODUCT No.)	(PACKING CAPACITY)			WEIGHT (Kg)		
	PCS/REEL	REELS/CARTON	PCS/CARTON	N.W./PCS	N.W./BOX	G.W./BOX
	1000	10	10000			

UNITS mm	SCALE 1:1	REV. B3	SHEET 1 OF 1	HDC 有限公司		
		DATE 2018.06.25	TITLE USB 3.1 C TYPE 沉板式双外壳DIP+SMT母座			
GENERAL TOLERANCE 0. ±0.30 0.0 ±0.20 0.00 ±0.15 0. ±4° 0.0° ±2°		DR. Apovi	MAT'L SEE TABLE		FINISH SEE TABLE	
		CHK. Apovi	DWG.NO.	A	PART NO. UC-026-003	SIZE A4
		APPD. ZHUFAGUI				

1

2

3

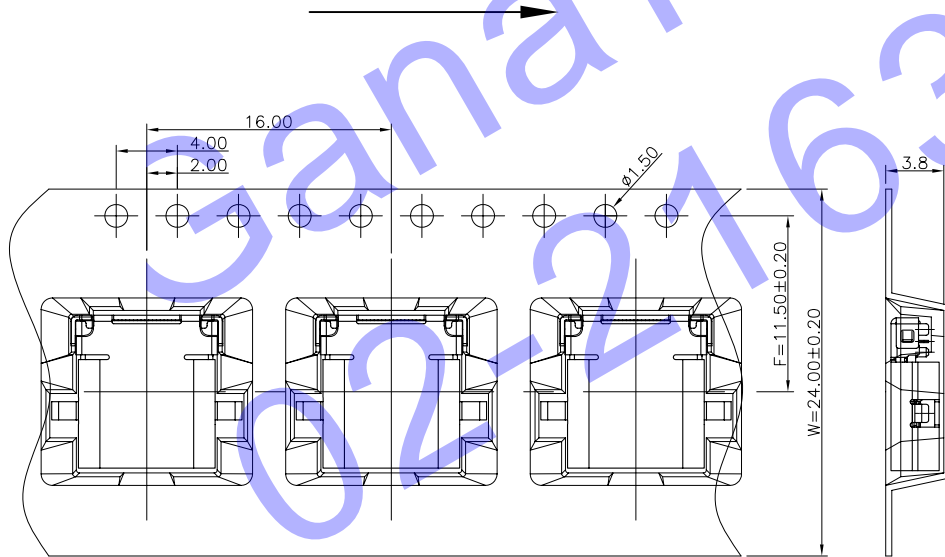
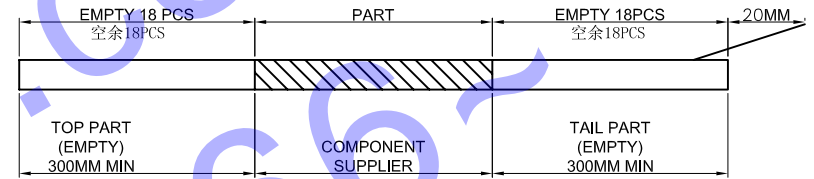
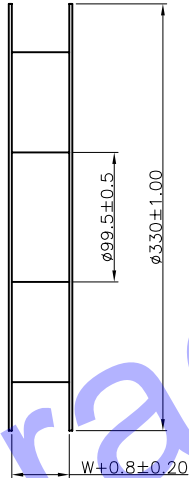
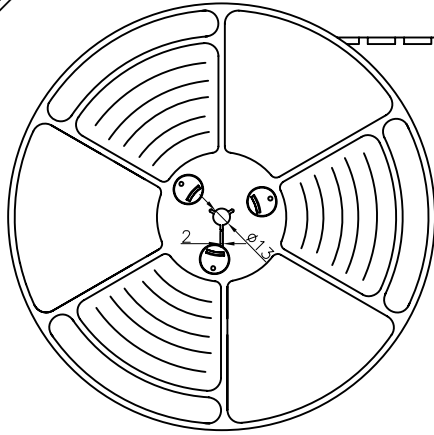
4

5

6



PULL OUT DIRECTION



UNITS mm	SCALE 1:1	REV. B3	SHEET 1 OF 1	HDC 有限公司	
		DATE 2018.05.25	TITLE USB 3.1 C TYPE 沉板式双外壳DIP+SMT母座		
		DR. Apovi	MAT'L SEE TABLE		FINISH SEE TABLE
GENERAL TOLERANCE 0. ±0.30 0.0 ±0.20 0.00 ±0.15 0. ±4° 0.0° ±2°		CHK. Apovi	DWG.NO.	A	PART NO. UC-026-003
		APPD. ZHUFAGUI			SIZE A4