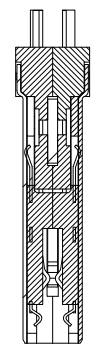
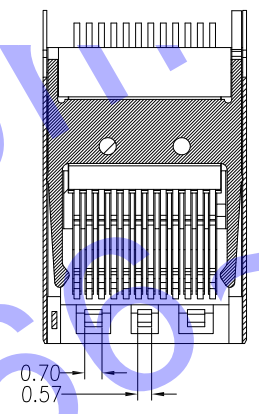
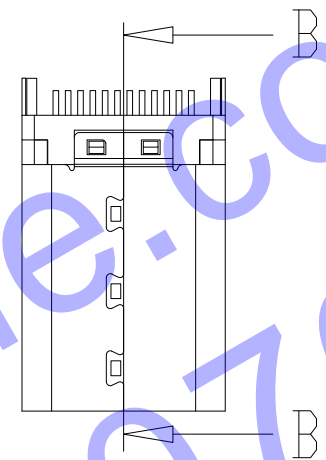
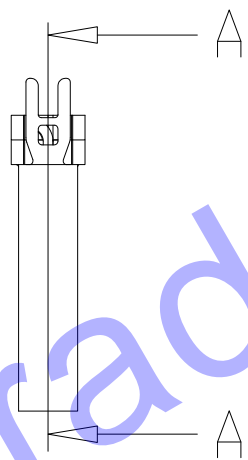
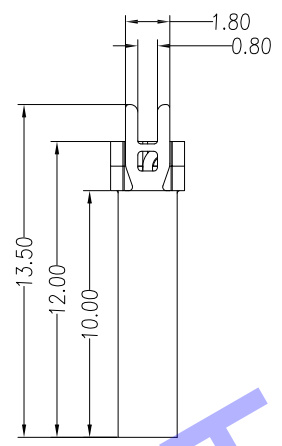
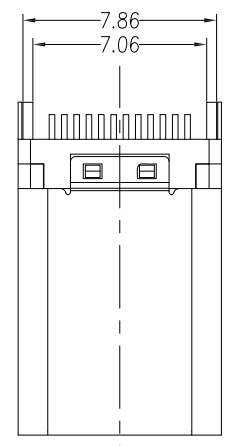
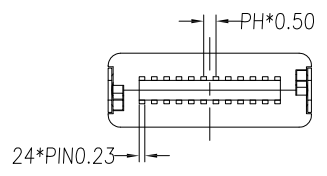
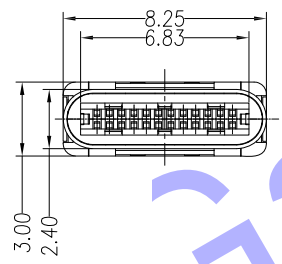


RoHS



剖面 A-A
比例 1:1

剖面 B-B
比例 1:1



材料:Material:

1. 塑胶: Housing: High Temperature Thermoplastics, LCP 耐高温塑胶
2. 端子: Contact: Copper Alloy 磷铜
3. 外壳: Shell: Copper Alloy 不锈钢
4. 卡钩: Shell: Copper Alloy 不锈钢
5. 弹片: Shell: Copper Alloy 不锈钢

电镀:Finish:

1. 端子: Contact: Plated Gold in Mating Area; Tin On Solder Tails
接触点镀金, 焊脚镀锡。
电镀类型: 1U"、3U"、15U"、30U"

A	图面发行	'09-12-09	QUALITY SYMBOLS	☉	UNIT	SCALE	TOLERANCES	ITEM	DESC	Q'TY	MATERIAL	REMARKS	PART REMARKS
	DESCRIPTION	DATE	■: CRITICAL ☒: MAJOR ▽: ZERO DEFECT ▽: S.P.C		mm	2.5 : 1	DIM. ± 0.20 ANGLE: 3°	APPROVED	CHECKED	DESIGN	DRAWN	PART NO. SSV-USBC006-01 DESCRIPTION USB TYPE-C 夹板式公头 DRAWING NO. AD1-A25	SHT 1/1 REV A
	H D C 有限公司												