

F

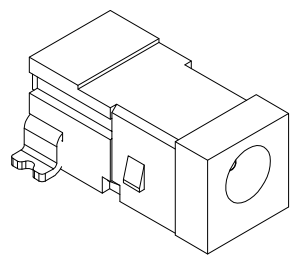
E

D

C

B

A

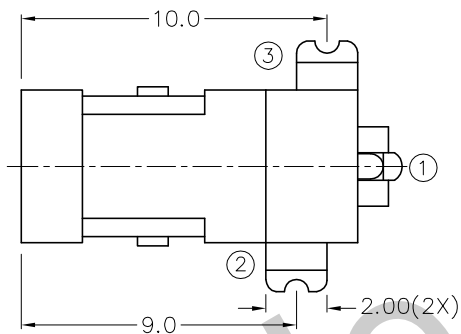


RoHS
Compliant

ZONE	SYMBOL	REVISION	APPROVAL	DATE
		ADDED INDICATION OF COPLANARITY	J.X.KUANG	20-2-2009

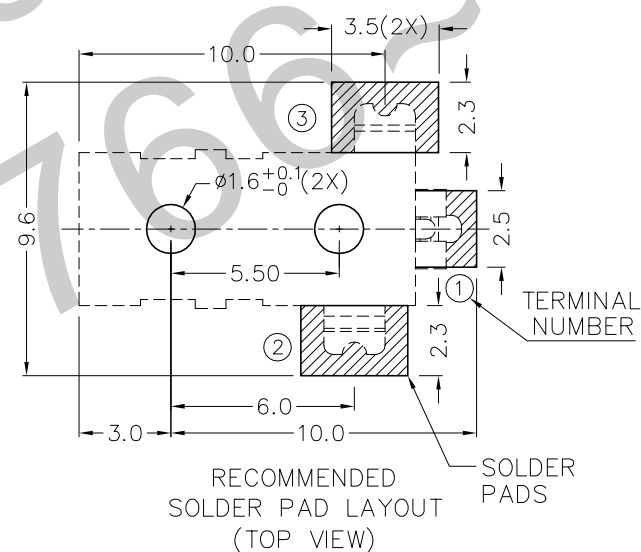
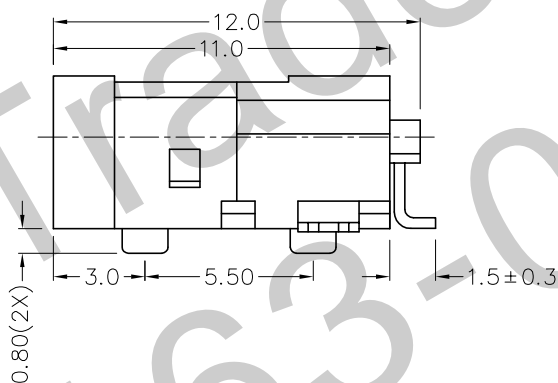
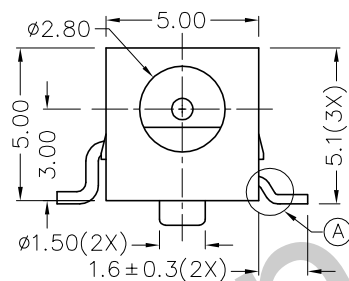
1

1



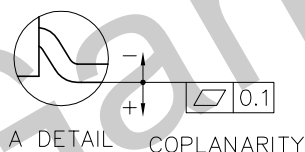
2

2



3

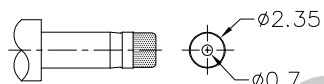
3



MODEL NO.	TDC-031H
SCHEMATIC	1 3 2
CENTER PIN	ø0.65mm

* MATERIAL

- TERMINAL 1 : BRASS
- TERMINAL 2 : COPPER ALLOY
- TERMINAL 3 : BRASS
- HOUSING : PA6T



DC MATE PLUG

4

4



TECHNIK INDUSTRIAL CO. LTD.

DESIGN	T.Y.LI	DATE	10-10-2003	SCALE	4:1
DRAWING	T.Y.LI	DATE	20-2-2009	MATERIAL	*
CHECK		DATE		DWG. NO.	TZ\DC031H-PA6T/C
APPROVAL		DATE		SHEET	

PART NAME	HIGH CURRENT SMD DC POWER SOCKET	TOLERANCE UNLESS	0.0±0.2	UNIT:	
PART NO.	TDC-031H	OTHERWISE SPECIFIED:	0.00±0.1 0.000±0.05	mm	

F

E

D

C

B

A