

F

E

D

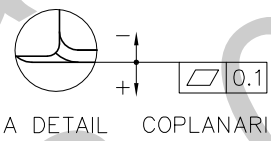
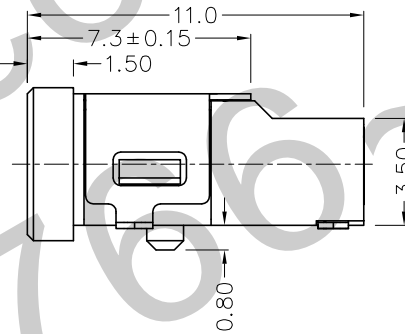
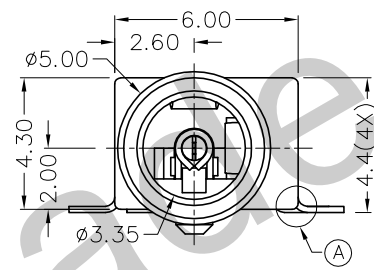
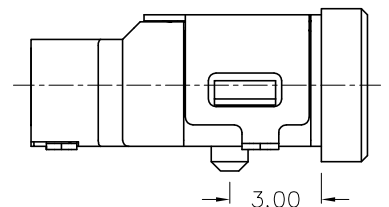
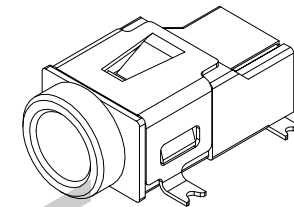
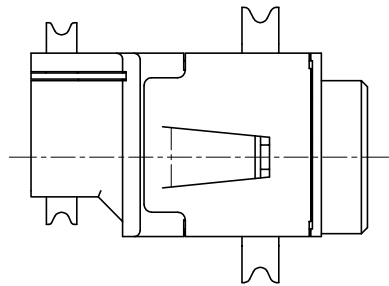
C

B

A

RoHS  
Compliant

ZONE	SYMBOL	REVISION	APPROVAL	DATE
		ADDED INDICATION OF COPLANARITY	J.X.KUANG	23-2-2009

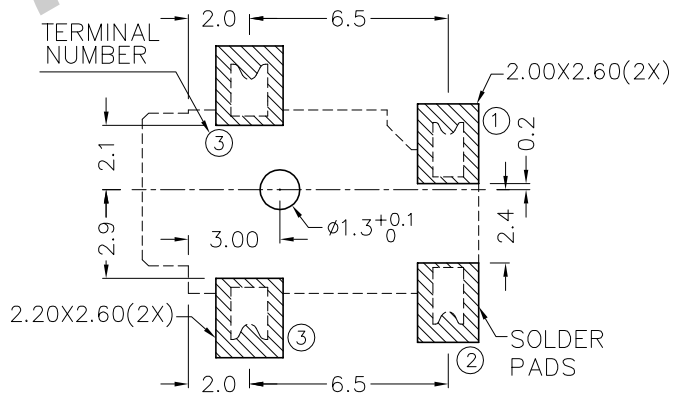


A DETAIL COPLANARITY

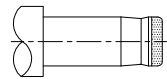
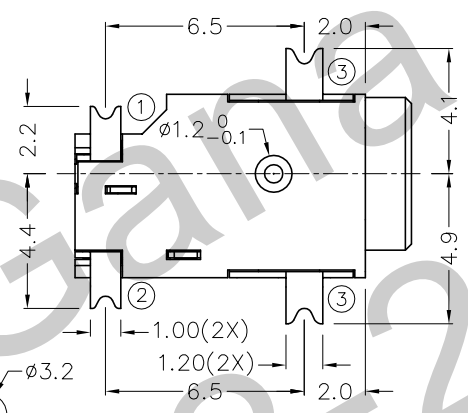
\* MATERIAL

- TERMINAL 1 : BRASS
- TERMINAL 2 : COPPER ALLOY
- TERMINAL 3 : COPPER ALLOY
- HOUSING : PA6T

MODEL NO.	TDC-042D
SCHMATIC	
CENTER PIN	ø0.8mm



RECOMMENDED  
SOLDER PAD LAYOUT  
(TOP VIEW)



DC MATE PLUG



TECHNIK INDUSTRIAL CO. LTD.

DESIGN	J.X.KUANG	DATE	19-5-2004	SCALE	4:1
DRAWING	T.Y.LI	DATE	23-2-2009	MATERIAL	*
CHECK		DATE		DWG. NO.	TZ\DC042D-PA6T/F
APPROVAL		DATE		SHEET	

PART NAME	SMD DC POWER SOCKET	TOLERANCE UNLESS	0.0±0.2	UNIT:	
PART NO.	TDC-042D	OTHERWISE SPECIFIED:	0.00±0.1 0.000±0.05	mm	

F

E

D

C

B

A