

F

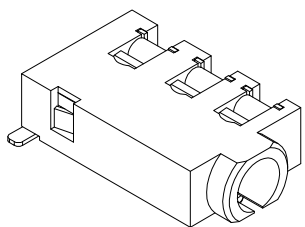
E

D

C

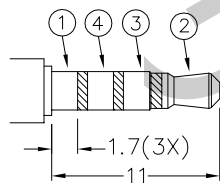
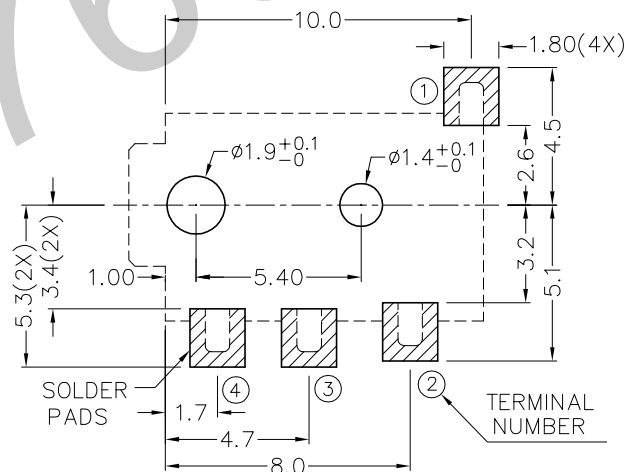
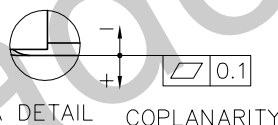
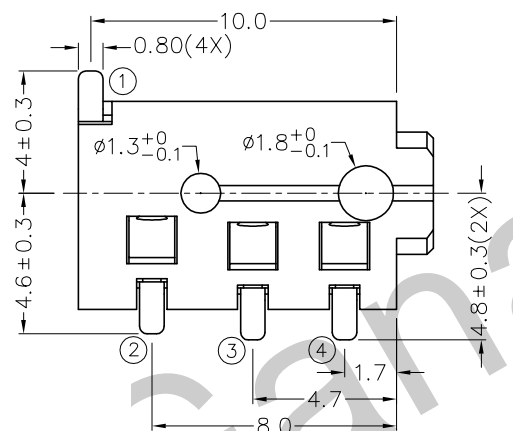
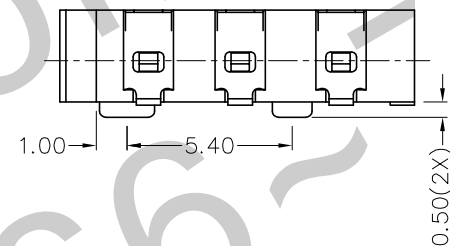
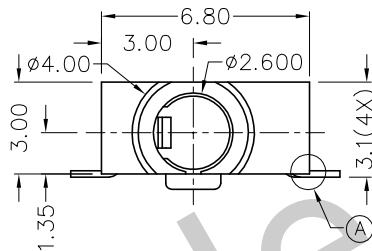
B

A



RoHS  
Compliant

ZONE	SYMBOL	REVISION	APPROVAL	DATE
		UPDATE DIM.	J.X.KUANG	27-10-2010



ø2.5 SPECIAL MATE PLUG

MODEL NO.	TG-2724
SCHMATIC	

\* MATERIAL

- TERMINAL 1 : COPPER ALLOY
- TERMINAL 2 : COPPER ALLOY
- TERMINAL 3 : COPPER ALLOY
- TERMINAL 4 : COPPER ALLOY
- HOUSING : PA6T

RECOMMENDED  
SOLDER PAD LAYOUT  
(TOP VIEW)



TECHNIK INDUSTRIAL CO. LTD.

PART NAME	2.5mm SMD STEREO JACK	TOLERANCE UNLESS	0.0±0.2	UNIT:	mm	DESIGN	J.JIANG	DATE	3-5-2004	SCALE	4:1
PART NO.	TG-272	OTHERWISE SPECIFIED:	0.00±0.1			DRAWING	T.Y.LI	DATE	27-10-2010	MATERIAL	*
			0.000±0.05			CHECK		DATE		DWG. NO.	TZ\TG272-PA6T/E
						APPROVAL		DATE		SHEET	

F

E

D

C

B

A