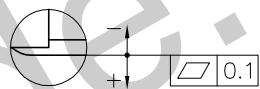
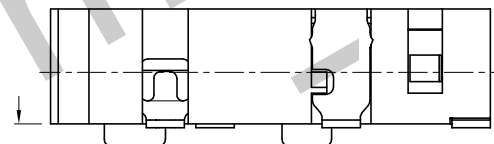
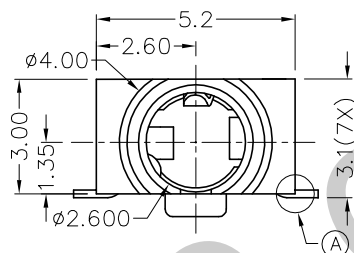
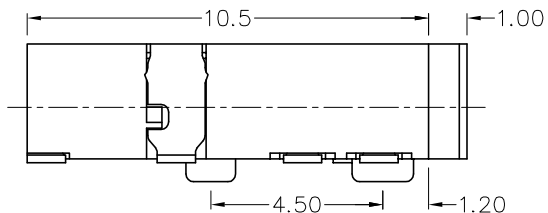
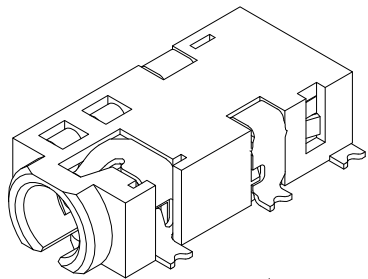


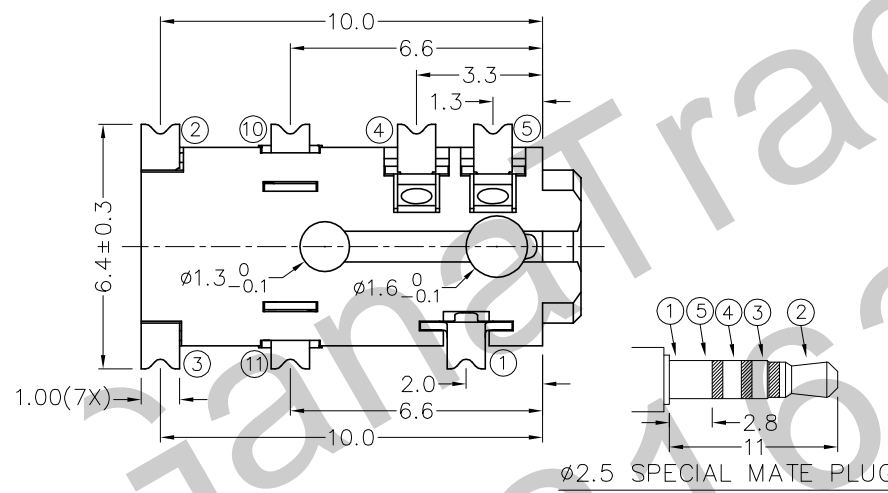
F E D C B A

RoHS  
Compliant

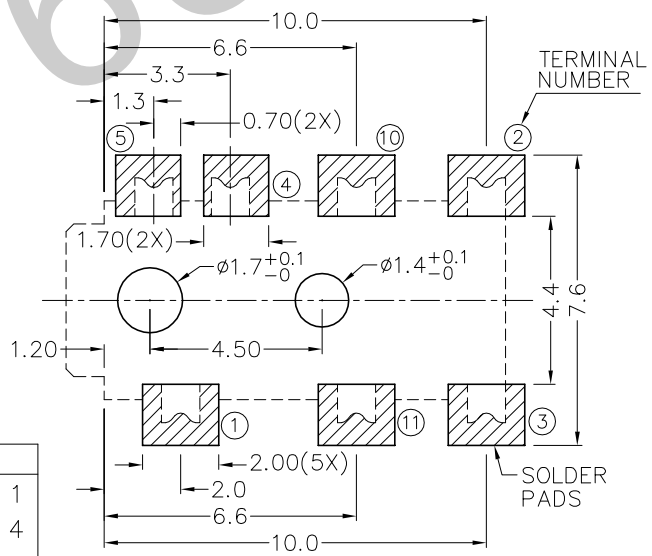
ZONE	SYMBOL	REVISION	APPROVAL	DATE
		ADDED INDICATION OF COPLANARITY	J.X.KUANG	25-12-2008



A DETAIL COPLANARITY



- \* MATERIAL
- TERMINAL 1 : COPPER ALLOY
  - TERMINAL 2 : COPPER ALLOY
  - TERMINAL 3 : COPPER ALLOY
  - TERMINAL 4 : COPPER ALLOY
  - TERMINAL 5 : COPPER ALLOY
  - TERMINAL 10 : COPPER ALLOY
  - TERMINAL 11 : COPPER ALLOY
  - HOUSING : PA6T



RECOMMENDED SOLDER PAD LAYOUT

MODEL NO.	TG-2937D	TG-2936AD	TG-2936BD	TG-2936KD	TG-2936D	TG-2935D
SCHMATIC						



TECHNIK INDUSTRIAL CO. LTD.

DESIGN	T.Y.LI	DATE	19-8-2005	SCALE	5:1
DRAWING	T.Y.LI	DATE	25-12-2008	MATERIAL	*
CHECK		DATE		DWG. NO.	TZ\TG293D-PA6T/D
APPROVAL		DATE		SHEET	

PART NAME	2.5mm SMD STEREO JACK	TOLERANCE UNLESS	0.0±0.2	UNIT:	mm
PART NO.	TG-293D	OTHERWISE SPECIFIED:	0.00±0.1 0.000±0.05		

F E D C B A