

F

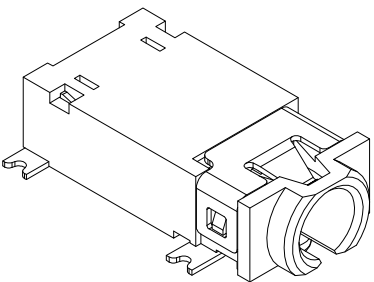
E

D

C

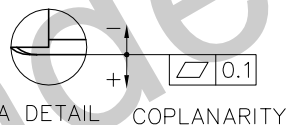
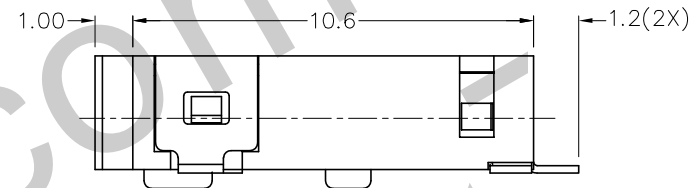
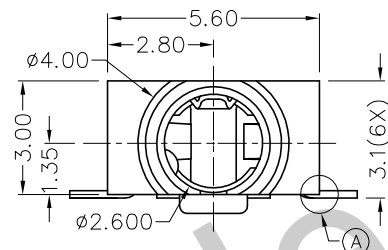
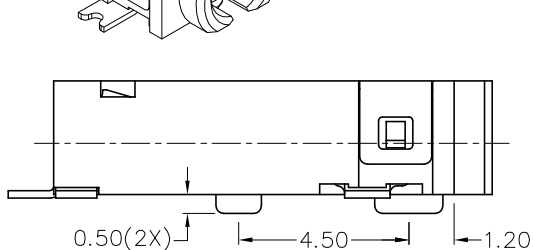
B

A



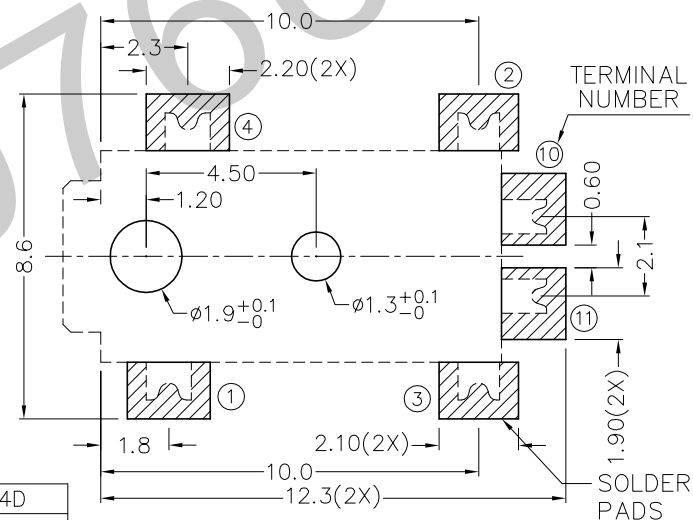
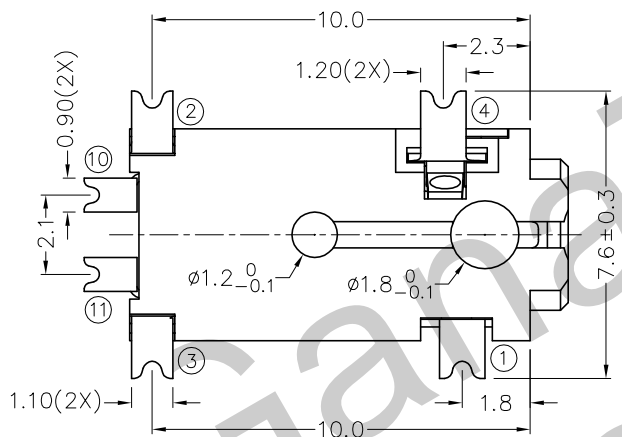
RoHS  
Compliant

ZONE	SYMBOL	REVISION	APPROVAL	DATE
		ADDED INDICATION OF COPLANARITY	J.X.KUANG	2-1-2009

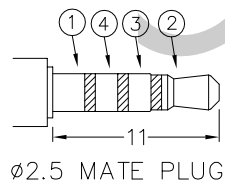


\* MATERIAL

TERMINAL 1 : COPPER ALLOY  
 TERMINAL 2 : BERYLLIUM COPPER  
 TERMINAL 3 : BERYLLIUM COPPER  
 TERMINAL 4 : COPPER ALLOY  
 TERMINAL 10 : COPPER ALLOY  
 TERMINAL 11 : COPPER ALLOY  
 HOUSING : PA6T



RECOMMENDED  
SOLDER PAD LAYOUT



MODEL NO.	TG-4006D	TG-4005AD	TG-4005BD	TG-4004D
SCHEMATIC				



TECHNIK INDUSTRIAL CO.LTD.

DESIGN	T.Y.LI	DATE	18-1-2007	SCALE	5:1
DRAWING	T.Y.LI	DATE	2-1-2009	MATERIAL	*
CHECK		DATE		DWG. NO.	TZ\TG400D-PA6T/B
APPROVAL		DATE		SHEET	

PART NAME 2.5mm SMD STEREO JACK

TOLERANCE UNLESS 0.0±0.2

UNIT: mm



PART NO. TG-400D

OTHERWISE SPECIFIED: 0.00±0.1  
0.000±0.05

F

E

D

C

B

A