

F

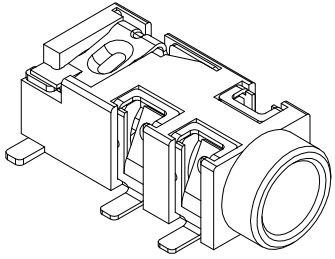
E

D

C

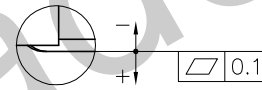
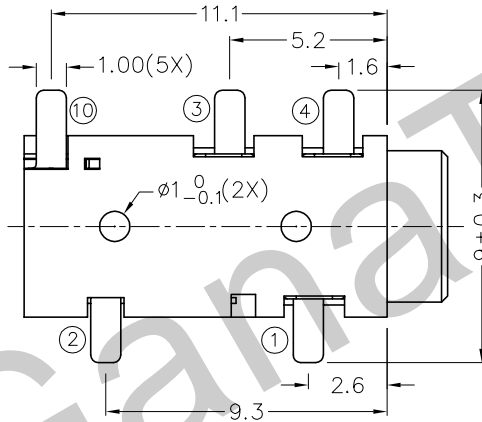
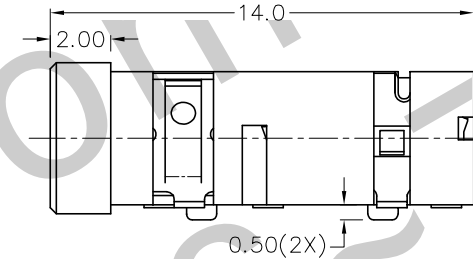
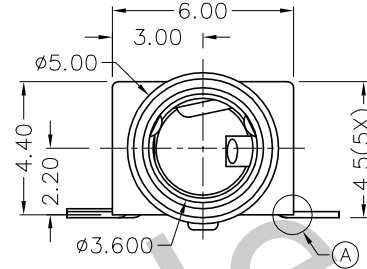
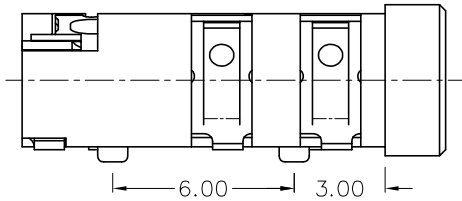
B

A



RoHS  
Compliant

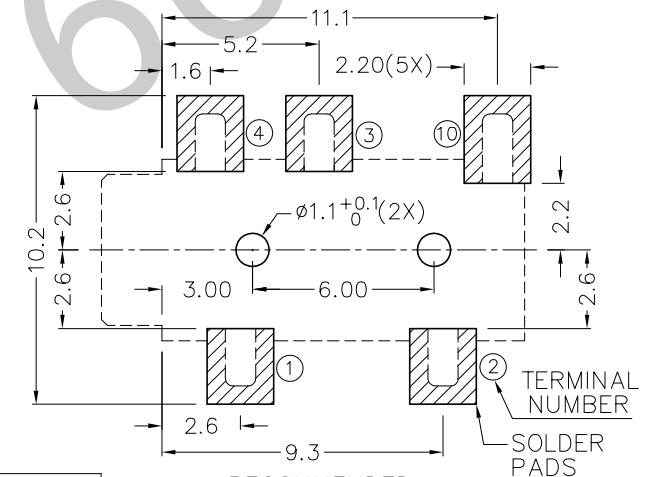
ZONE	SYMBOL	REVISION	APPROVAL	DATE
		ADDED INDICATION OF COPLANARITY	J.X.KUANG	27-11-2008



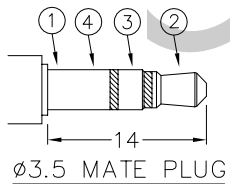
A DETAIL COPLANARITY

\* MATERIAL

TERMINAL 1 : COPPER ALLOY  
 TERMINAL 2 : COPPER ALLOY  
 TERMINAL 3 : COPPER ALLOY  
 TERMINAL 4 : COPPER ALLOY  
 TERMINAL 10 : BRASS  
 HOUSING : PA6T



RECOMMENDED  
SOLDER PAD LAYOUT



3.5mm MATE PLUG

MODEL NO.	TSH-3865D	TSH-3864D	TSH-3864AD	TSH-3863D	TSH-3863AD
SCHEMATIC					



TECHNIK INDUSTRIAL CO.LTD.

DESIGN	L.L.ZHANG	DATE	23-04-2005	SCALE	4:1
DRAWING	T.Y.LI	DATE	27-11-2008	MATERIAL	*
CHECK		DATE		DWG. NO.	TZ\SH386D-PA6T/E
APPROVAL		DATE		SHEET	

PART NAME	3.5mm SMD STEREO JACK	TOLERANCE UNLESS	0.0±0.2	UNIT:	mm
PART NO.	TSH-386D	OTHERWISE SPECIFIED:	0.00±0.1 0.000±0.05		

F

E

D

C

B

A