

F

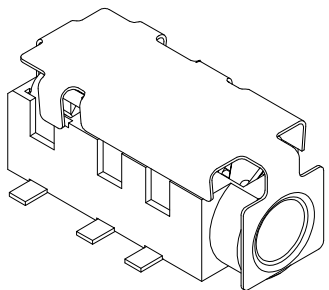
E

D

C

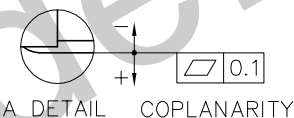
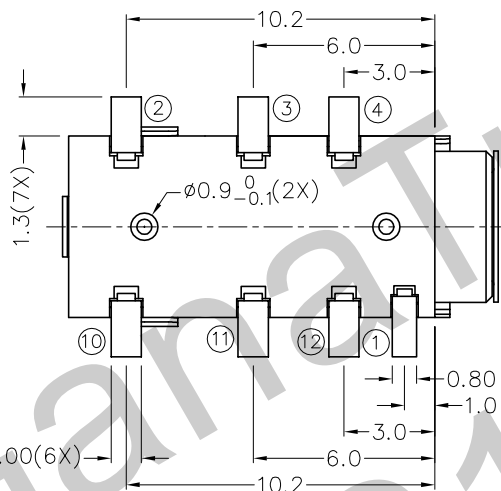
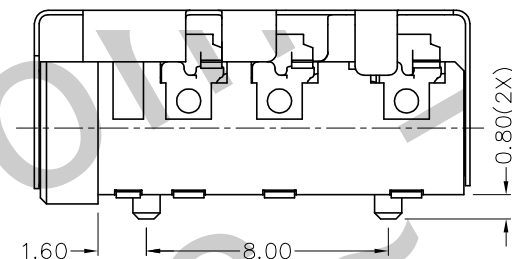
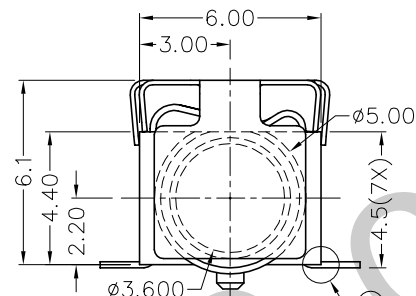
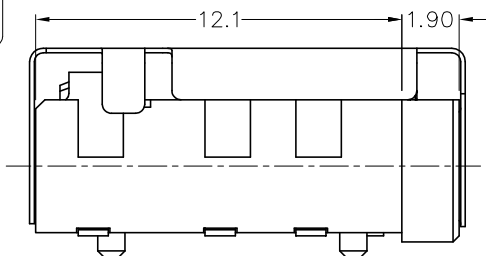
B

A



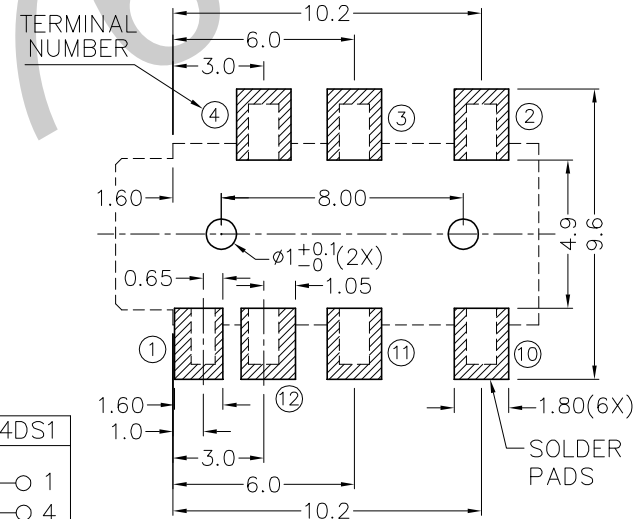
RoHS
Compliant

| ZONE | SYMBOL | REVISION | APPROVAL | DATE |
|------|--------|---------------------------------|-----------|------------|
| | | ADDED INDICATION OF COPLANARITY | J.X.KUANG | 28-11-2008 |
| | | | | |
| | | | | |

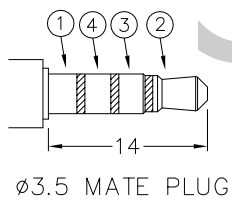


* MATERIAL

TERMINAL 1 : COPPER ALLOY
 TERMINAL 2 : COPPER ALLOY
 TERMINAL 3 : COPPER ALLOY
 TERMINAL 4 : COPPER ALLOY
 TERMINAL 10 : BRASS
 TERMINAL 11 : BRASS
 TERMINAL 12 : BRASS
 SHIELD : STAINLESS STEEL
 HOUSING : PA6T



RECOMMENDED
SOLDER PAD LAYOUT



| MODEL NO. | TSH-3907DS1 | TSH-3906ADS1 | TSH-3905ADS1 | TSH-3905BDS1 | TSH-3904DS1 |
|-----------|-------------|--------------|--------------|--------------|-------------|
| SCHEMATIC | | | | | |



TECHNIK INDUSTRIAL CO.LTD.

| | | | | | |
|----------|--------|------|------------|----------|--------------------|
| DESIGN | T.Y.LI | DATE | 1-12-2005 | SCALE | 4:1 |
| DRAWING | T.Y.LI | DATE | 28-11-2008 | MATERIAL | * |
| CHECK | | DATE | | DWG. NO. | TZ\SH390DS1-PA6T/B |
| APPROVAL | | DATE | | SHEET | |

| | | | | | |
|-----------|--|----------------------|------------------------|-------|----|
| PART NAME | 3.5mm SMD STEREO JACK W/HANDING SHIELD | TOLERANCE UNLESS | 0.0±0.2 | UNIT: | mm |
| PART NO. | TSH-390DS1 | OTHERWISE SPECIFIED: | 0.00±0.1 0.000±0.05 | | |

F

E

D

C

B

A