

F

E

D

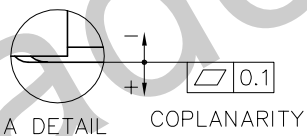
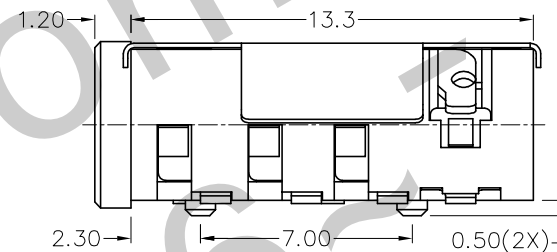
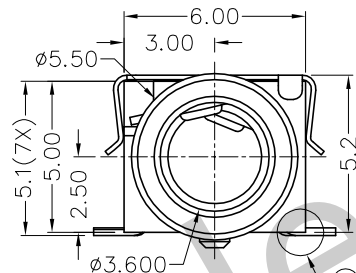
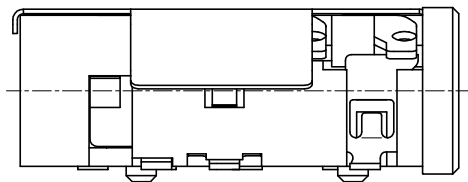
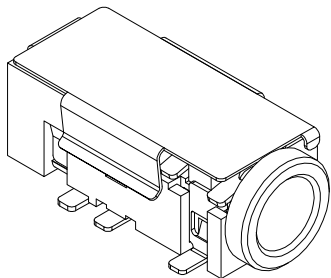
C

B

A

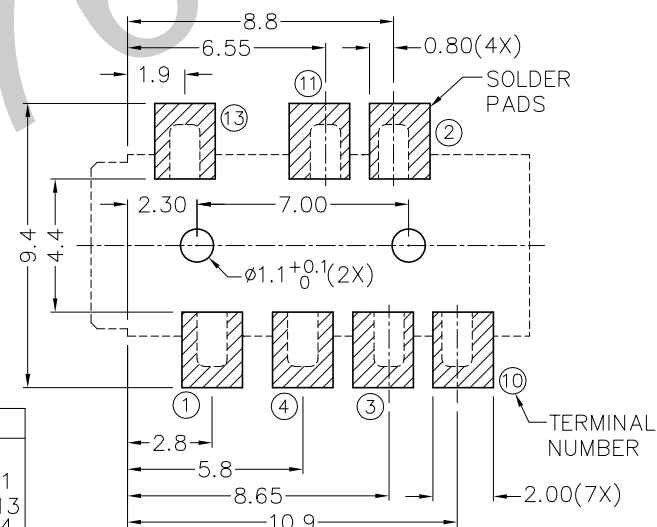
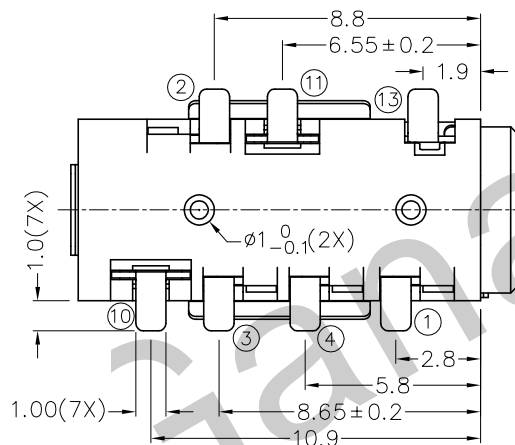
ZONE	SYMBOL	REVISION	APPROVAL	DATE
		ADDED INDICATION OF COPLANARITY	J.X.KUANG	16-12-2008

RoHS
Compliant

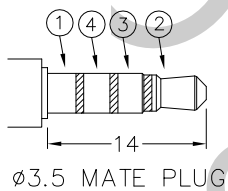


* MATERIAL

TERMINAL 1 : COPPER ALLOY
 TERMINAL 2 : COPPER ALLOY
 TERMINAL 3 : COPPER ALLOY
 TERMINAL 4 : COPPER ALLOY
 TERMINAL 10 : BRASS
 TERMINAL 11 : BRASS
 TERMINAL 13 : COPPER ALLOY
 SHIELD : STAINLESS STEEL
 HOUSING : PA6T



RECOMMENDED
SOLDER PAD LAYOUT



MODEL NO.	TSH-5017DS1	TSH-5016ADS1	TSH-5016BDS1	TSH-5015DS1
SCHEMATIC				



TECHNIK INDUSTRIAL CO.LTD.

DESIGN	T.Y.LI	DATE	1-8-2007	SCALE	4:1
DRAWING	T.Y.LI	DATE	16-12-2008	MATERIAL	*
CHECK		DATE		DWG. NO.	TZ\SH501DS1-PA6T/B
APPROVAL		DATE		SHEET	

PART NAME	3.5mm SMD STEREO JACK W/HANDING SHIELD	TOLERANCE UNLESS	0.0±0.2	UNIT:	
PART NO.	TSH-501DS1	OTHERWISE SPECIFIED:	0.00±0.1 0.000±0.05	mm	

F

E

D

C

B

A