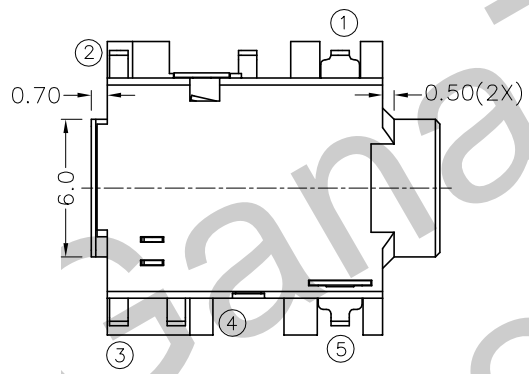
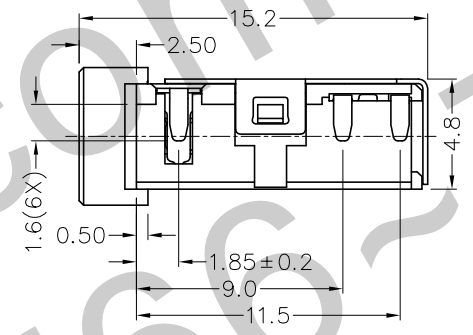
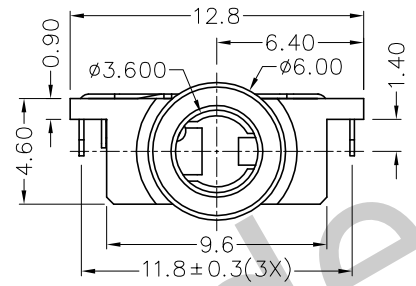
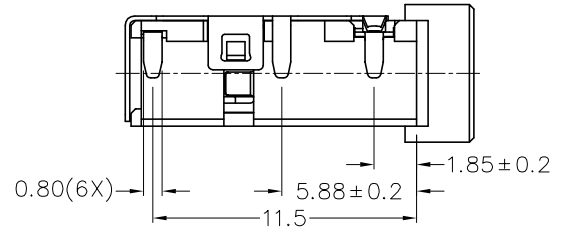
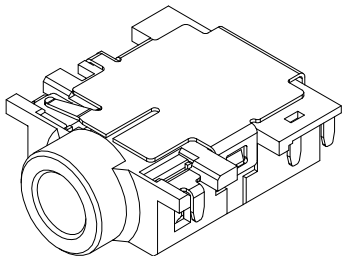


F E D C B A

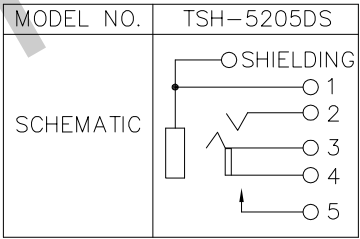
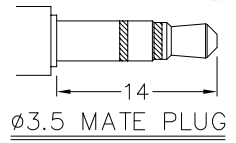
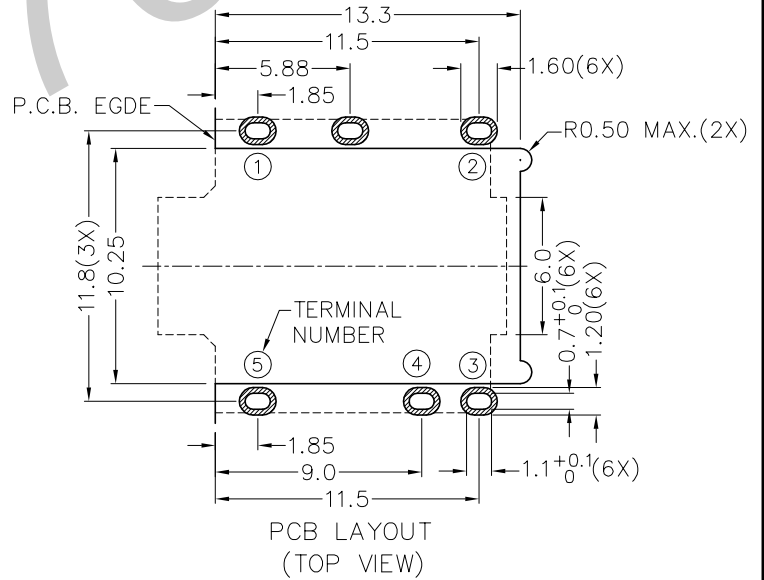
| ZONE | SYMBOL | REVISION | APPROVAL | DATE |
|------|--------|----------|----------|------|
|      |        |          |          |      |
|      |        |          |          |      |
|      |        |          |          |      |

RoHS  
Compliant



\* MATERIAL

- TERMINAL 1 : COPPER ALLOY
- TERMINAL 2 : COPPER ALLOY
- TERMINAL 3 : COPPER ALLOY
- TERMINAL 4 : COPPER ALLOY
- TERMINAL 5 : COPPER ALLOY
- SHIELD : COPPER ALLOY
- HOUSING : PA6T



TECHNIK INDUSTRIAL CO. LTD.

|           |                       |  |             |          |         |      |           |          |                   |
|-----------|-----------------------|--|-------------|----------|---------|------|-----------|----------|-------------------|
| PART NAME | 3.5mm SMD STEREO JACK | TOLERANCE UNLESS<br>0.0±0.2<br>0.00±0.1<br>OTHERWISE SPECIFIED: 0.000±0.05 | UNIT:<br>mm | DESIGN   | H.L.TAN | DATE | 12-5-2011 | SCALE    | 3:1               |
|           |                       |  |             | DRAWING  | H.L.TAN | DATE | 12-5-2011 | MATERIAL | *                 |
| PART NO.  | TSH-520DS             |  |             | CHECK    |         | DATE |           | DWG. NO. | TZ\SH520DS-PA6T/A |
|           |                       |  |             | APPROVAL |         | DATE |           | SHEET    |                   |

F E D C B A